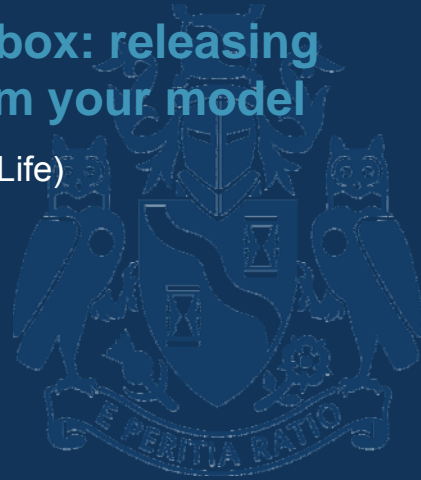




Institute
and Faculty
of Actuaries

Locked in the black box: releasing business insight from your model

Malachy Magennis (Standard Life)
Ian Rogers (KPMG)



29 October 2013

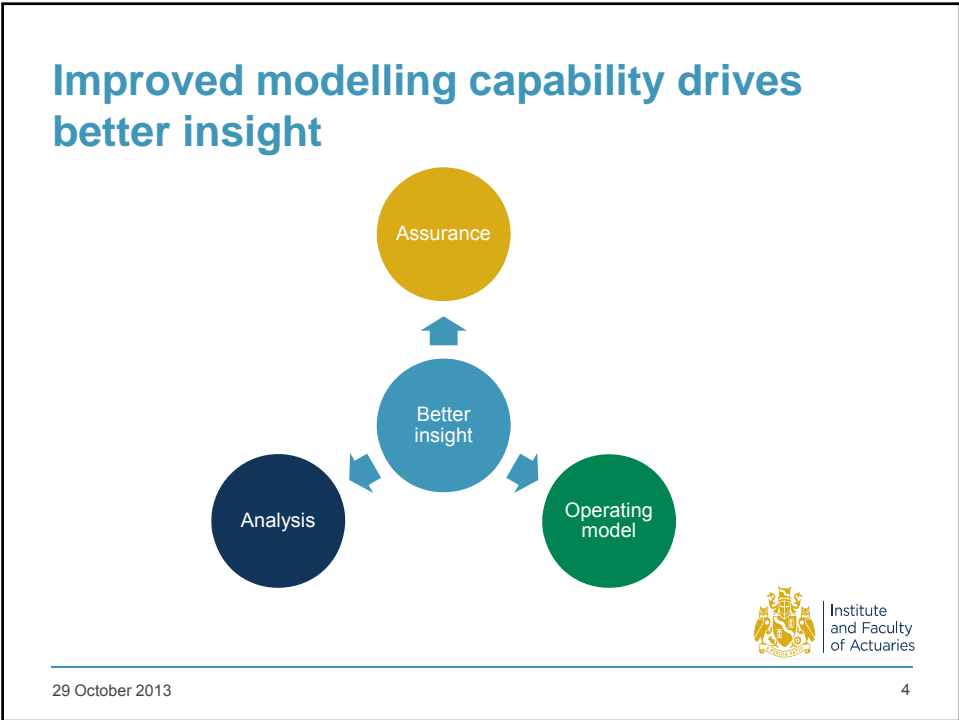
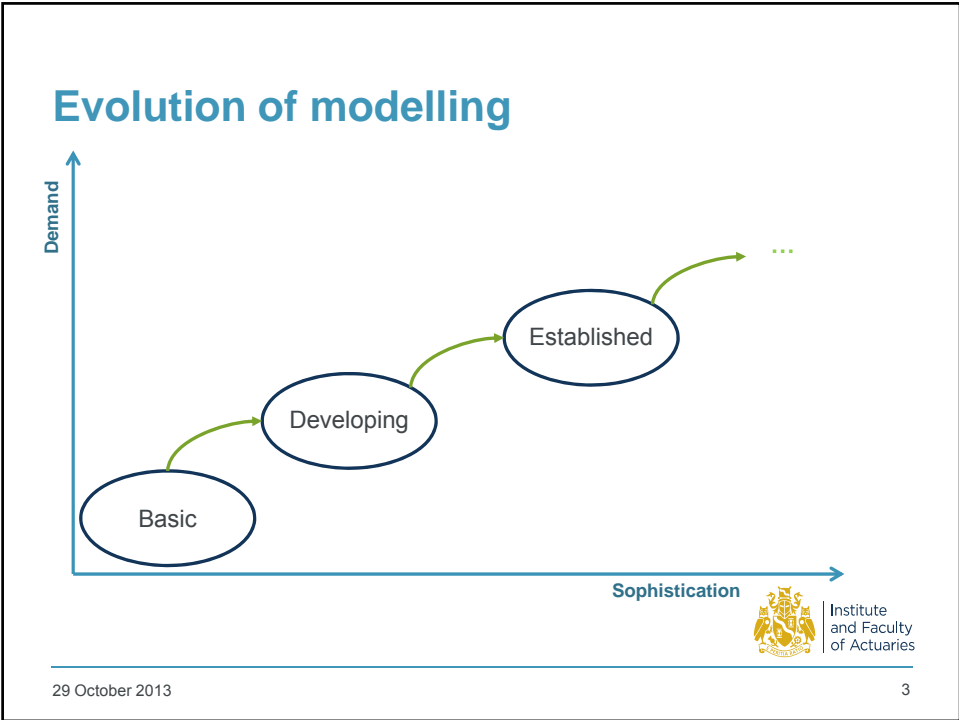
Introduction

What do your
models tell
you?

What drives
your current
approach?



29 October 2013




Assurance

Control

Automation

Predictability



Institute and Faculty of Actuaries

29 October 2013

5

Assurance

Case Study: Standard Life Automation and Control

2011

- Automated calibration of stochastic model
- Combine all deterministic models into one

Finance Inputs Store

Inputs Mgmt System

Liability Model Suite

Asset Model Suite

~~Out of Model Adjustments~~

Aggregator Model

Results Data Store & Cognos Reports

QRT Store

2013-14

2010-11


2009

2010-11

2012

2014

2015+



Institute and Faculty of Actuaries

29 October 2013

6

Operating Model

- Structural
 - Product vs reporting basis
 - Reporting vs risk management
 - Assets and liabilities
- Streamlining
 - Model Rationalisation
 - Process Standardisation

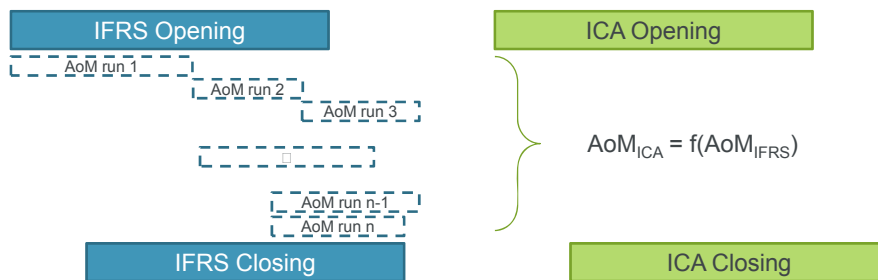


Institute and Faculty of Actuaries

29 October 2013

7

Operating Model Case Study: One Analysis of Movement



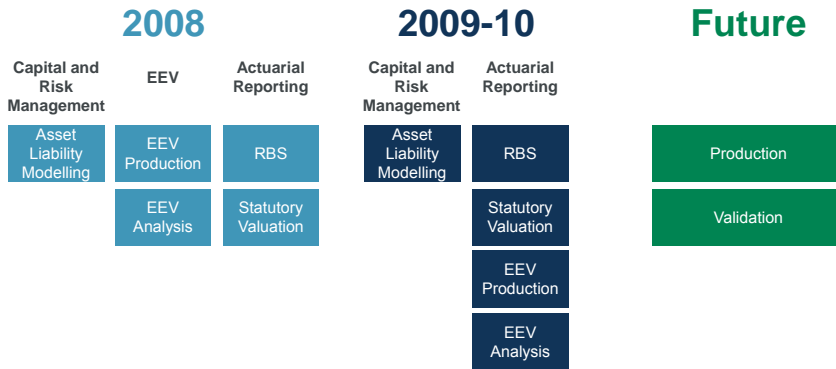
Institute and Faculty of Actuaries

29 October 2013

8

Operating Model:

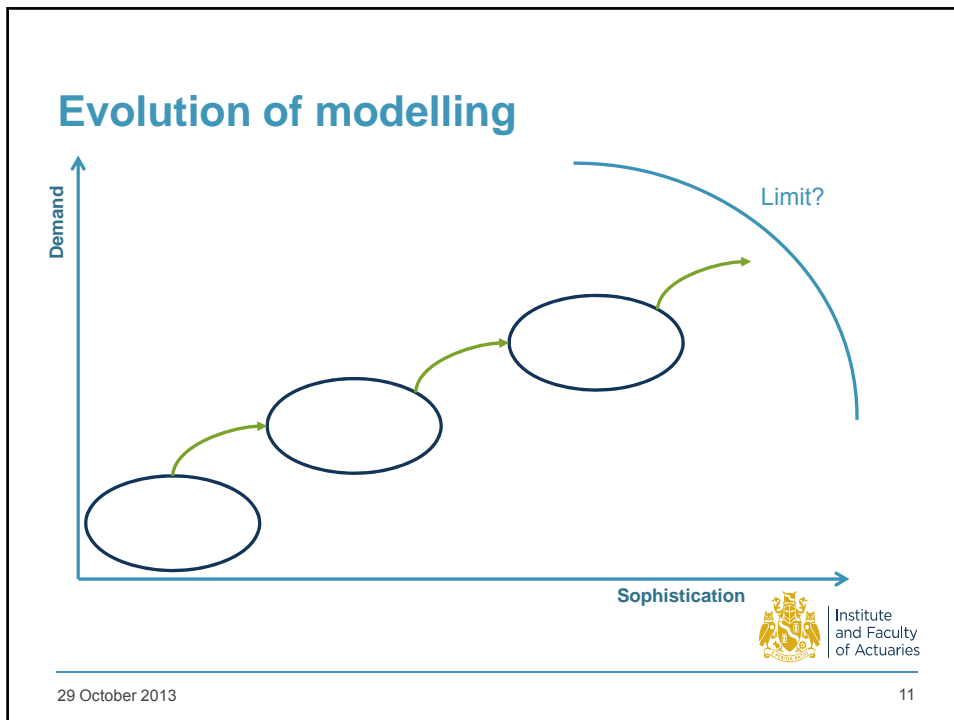
Case Study: Standard Life Operating Model



Analysis

- Improving analysis
 - Avoid duplicating validation
 - Have the right information to hand
 - Know what to look at
 - Know when to stop
- Reasons for analysis






Questions

Comments

Expressions of individual views by members of the Institute and Faculty of Actuaries and its staff are encouraged.

The views expressed in this presentation are those of the presenters.



Institute and Faculty of Actuaries

29 October 2013 12