



**The Actuarial Profession**  
making financial sense of the future®

Life Conference 2012  
Steven Baxter, Richard Lewney, Dr Catherine Prescott, John Woodford

# The Potential Impact of Stem Cell Therapy on our Industry

6<sup>th</sup> November 2012

© 2012 The Actuarial Profession • www.actuaries.org.uk

## Preamble What the papers say

### THE TIMES

Stem-cell treatments help ease patients' blindness

First windpipe transplant on a child is declared a success

### The Telegraph

Teenager injected with own stem cells in groundbreaking immune treatment

Scarred hearts can be restored to health with stem cell treatment, say researchers

Spinal cord injury treatment hope after new stem cell breakthrough

### The INDEPENDENT

Stem cells safe for rare brain disorder  
Vein grown using girl's stem cells

### theguardian

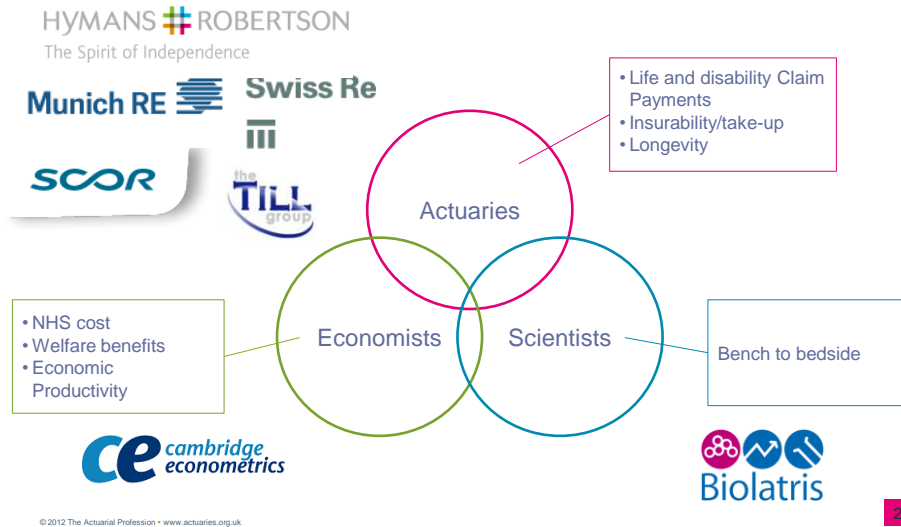
Neural stem cells injected into the brain of a stroke patient in world first  
Tests begin on stem cell cure for rare heart disease

**The potential of stem cell research is almost biblical in its scale, *The Guardian*, February 2009**

© 2012 The Actuarial Profession • www.actuaries.org.uk

1

## Preamble Cross-Industry Working Group



## Preamble The Working Group

### Aim

Develop an evidence-based value proposition of the potential impact of regenerative medicines on the protection and pensions industries.

### Premise

1. Anticipated benefits of regenerative medicines are aligned with re/insurance products;
2. Hurdles limiting regenerative medicine development and market uptake represent an opportunity cost

## Agenda for today

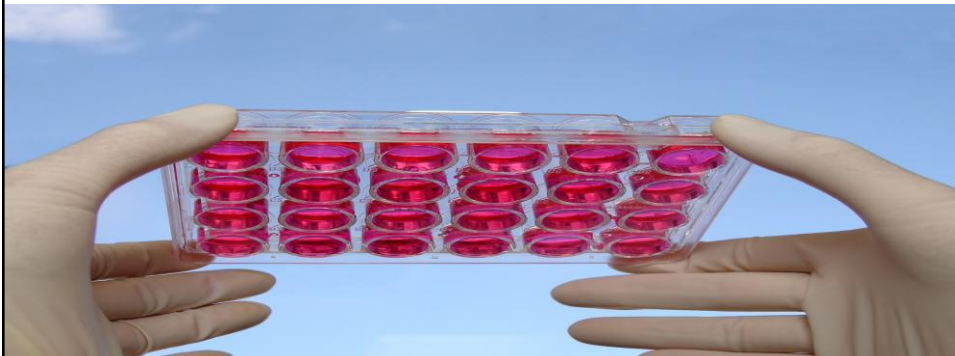
- The scientist's perspective Dr Cathy Prescott
  - Science of stem cell therapy
  - Cell therapy products and pipeline
  - Challenges facing the stem cell Industry
  - Introduction to diabetes case study
- The economist's perspective Richard Lewney
  - The scale of the burden of ill health and the benefits of regenerative medicines
  - Costs and benefits within the health system and the wider economy
  - Case study: diabetes, the silent epidemic
- The actuary's perspective Steven Baxter
  - Relevant to UK insurance industry?
  - Case study of diabetes
  - Multi-state modelling and the challenges we face

© 2012 The Actuarial Profession • www.actuaries.org.uk

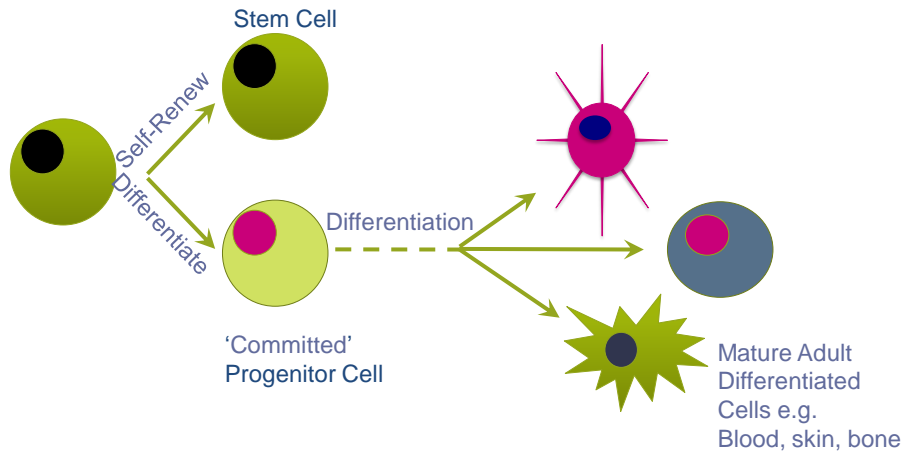
4

## The scientist's perspective

Dr Catherine Prescott



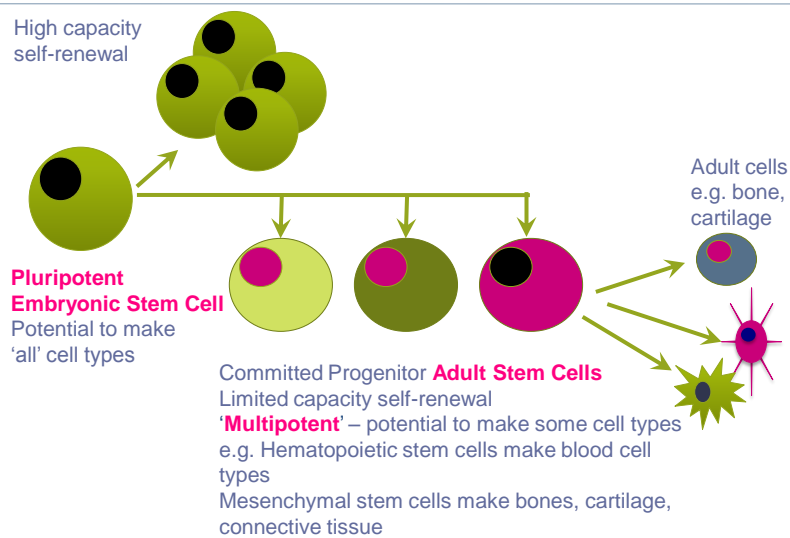
## What is a stem cell?



© 2012 The Actuarial Profession • www.actuaries.org.uk

6

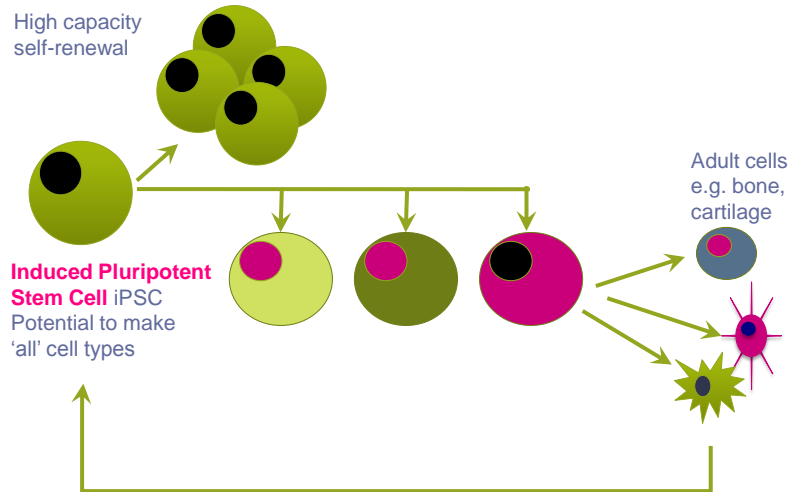
## Types of stem cells



© 2012 The Actuarial Profession • www.actuaries.org.uk

7

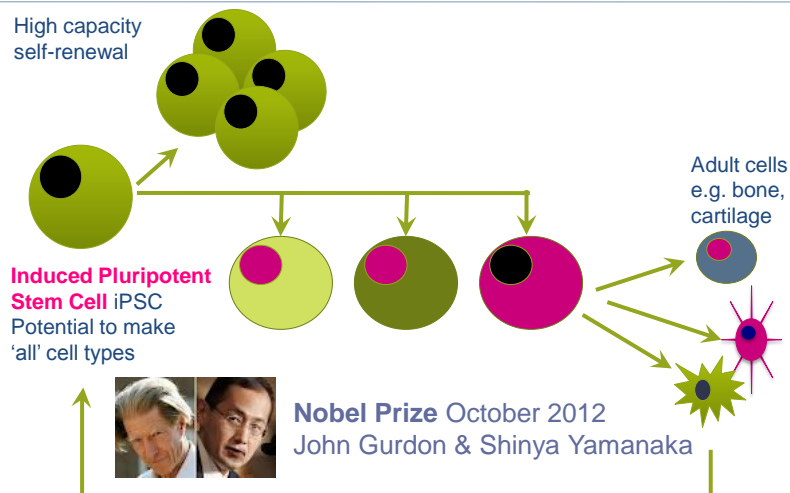
## Types of stem cells



© 2012 The Actuarial Profession • www.actuaries.org.uk

8

## Types of stem cells



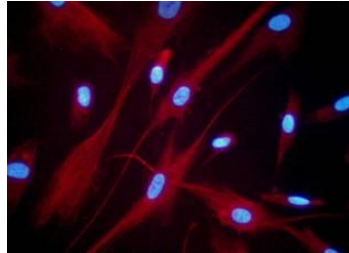
© 2012 The Actuarial Profession • www.actuaries.org.uk

9

## What is regenerative medicine?

Clinical applications focused on the repair, replacement or regeneration of cells, tissues or organs to **restore** impaired function.

Fibroblasts have been used to treat –  
venous stasis ulcers,  
diabetic ulcers, scar  
contractures,  
hypertrophic scars,  
stretch marks, acne  
scars, naso-labial  
folds & epidermolysis  
Bullosa erosions.



Fluorescent-labeled human fibroblasts  
Source: Image courtesy of Intercytex

## What are regenerative medicines?

**Cells**, chemicals (drugs) or biologics

Cell therapies may function **transiently** to deliver signals that

- **stimulate** a patients own stem cell-based **repair** system and/or
- exert an anti-inflammatory immuno-modulatory effect thus creating a better environment for natural repair processes

Cell therapies may **engraft/transplant** > **replacing** the diseased or damaged cells.

## Where do cells for therapies come from?

**Mature cells** e.g. pancreatic islets, skin

- isolated from the living donor or cadaver
- derived from stem cells

**Adult stem cells** e.g. mesenchymal stem cells

- from bone marrow or cord blood

**Pluripotent stem cells** (embryonic/iPSC) - **derived** cells

© 2012 The Actuarial Profession • www.actuaries.org.uk

12

## Where do cells for therapies come from?



Donor = Patient

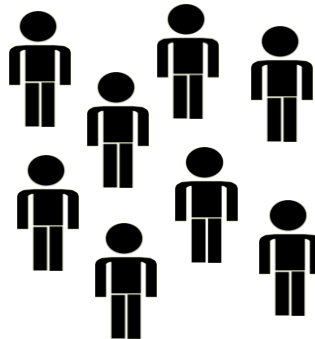
**Autologous**  
Personalized  
Medicine

e.g. Chronic applications



1 Donor ≠ Patient

**Allogeneic**  
Could be one or  
multiple patients  
'Off-the-shelf'  
Acute & chronic



© 2012 The Actuarial Profession • www.actuaries.org.uk

13

## Cell therapies on the market

COMPANY	PRODUCT	TARGET
Shire (Advanced BioHealing)	Dermagraft	Skin
Altrika	MySkin	Skin
Avita Medical	ReCell	Skin
BioTissue Technologies GmbH	BioSeed-C	Cartilage
Dendreon	Provenge	Cancer
Euroderm	Epidex, Epigraft	Skin
Japan Tissue Engineering Co.	J-TEC Epidermis Cartilage Corneal Epithelium	Skin Cartilage Eye
Nuvasive	Osteocel Plus	Bone
Sanofi (Genzyme)	Epicel, Carticel	Skin Cartilage
TiGenix	ChondroCelect	Cartilage

All Autologous except Dermagraft (allogeneic)

© 2012 The Actuarial Profession • www.actuaries.org.uk

14

## Cell therapy pipeline

Year	Trials initiated	Completed	Phase 1	Phase 2	Phase 3
2005	13	0	10	2	0
2006	15	0	9	3	2
2007	19	2	10	7	2
2008	21	4	12	6	1
2009	32	5	20	11	2
2010	32	15	21	8	2
2011	25	2	18	7	0
Total	157	28	100	44	9

Clinical trial data for all major indications (excluding oncology)

Source: Alliance for Regenerative Medicine

© 2012 The Actuarial Profession • www.actuaries.org.uk

15



## The potential and impact of regenerative medicines

Regenerative medicines have the potential to:

- restore function ('cure')
- improve the condition (partial restoration of function)
- decrease the probability and/or timing of onset of co-morbidities

Impact?

- alter morbidity and mortality risk profiles

Predicted benefits:

- cost savings (cure/improved disease management)
- decreased claims (cure/improved disease management)
- new market access ('higher-risk' population)
- recover loss of economic productivity

© 2012 The Actuarial Profession • www.actuaries.org.uk

16

## Cell therapy industry challenges

CHALLENGE	FEATURE	POTENTIAL IMPACT
Cost of Goods	<u>Cell-based</u> regenerative medicines anticipated to be relatively expensive	Reimbursement status uncertain Limited uptake Shared-risk reimbursement models
Time to Benefit	Maximal benefit anticipated to accrue over time (years)	Misalignment with budget cycles Reimbursement status uncertain Limited uptake
Evaluation	Evidenced-based value proposition across multiple benefits	Cost of complex clinical trials (multiple endpoints and time) Data capture for co-morbidities and non-healthcare benefits
Business Model	Product/service: market penetration and profit margins	Limited engagement by large corps Sub-optimal VC model Alternative source of funding required

© 2012 The Actuarial Profession • www.actuaries.org.uk

17

## Limited Pharma engagement – why?

Business model – unclear & different

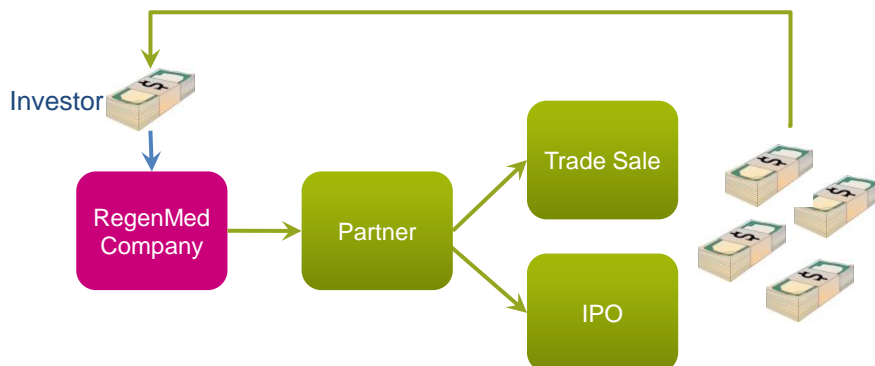
Route to market relatively untested (“unknown unknowns”)

© 2012 The Actuarial Profession • www.actuaries.org.uk

18

## Limited Pharma engagement – impact?

Venture Capital



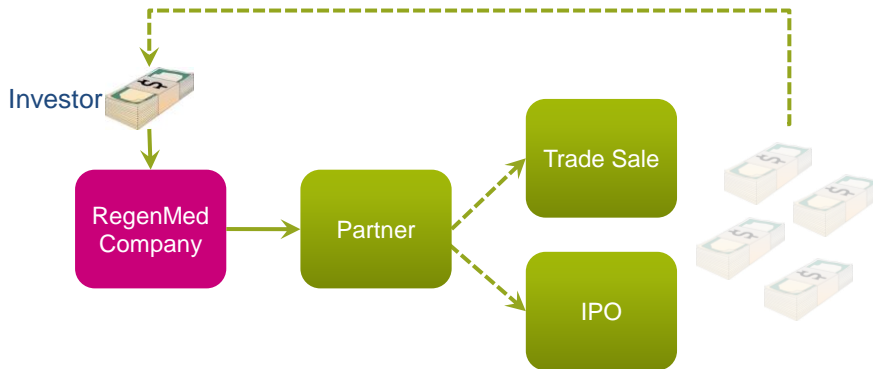
© 2012 The Actuarial Profession • www.actuaries.org.uk

19

## Limited Pharma engagement – impact?

Sub-optimal venture capital model

Limited development capital for regenerative medicines



© 2012 The Actuarial Profession • www.actuaries.org.uk

20

## Interim summary

- Increasing & ageing population > Economic burden on healthcare and pensions provision.
- Chronic diseases are the leading causes of death and morbidity.
- Regenerative medicines:
  - potential to influence morbidity and longevity;
  - potential multiple benefits (health and productivity)
  - hurdles limit their market penetration
  - lack of adequate development capital

© 2012 The Actuarial Profession • www.actuaries.org.uk

21

## Key questions

1. Which industries have long-term perspectives on morbidity & longevity?
  - Re/insurance
  - Pension
2. How can regenerative medicines influence the value of re/insurance-product revenue?
3. What is the potential value?
4. Is the potential value a sufficient incentive to
  - support the development of regenerative medicines?
  - support the market penetration of regenerative medicines?

© 2012 The Actuarial Profession • www.actuaries.org.uk

22

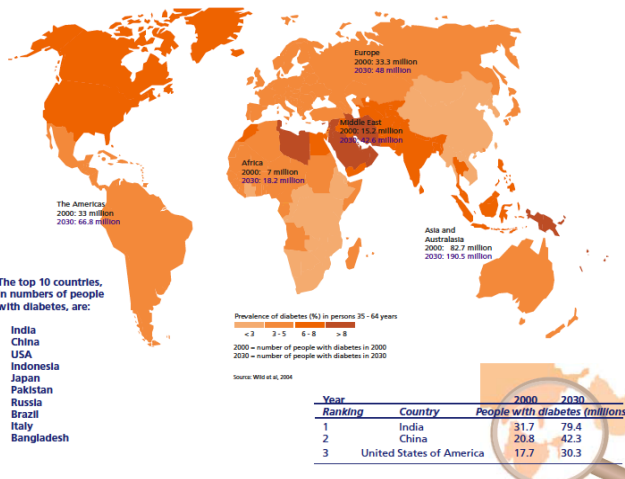
## The potential impact of regenerative medicines Case study: Targeting Types 1 and 2 diabetes

### Prevalence of diabetes

## DIABETES THE SILENT EPIDEMIC

The top 10 countries, in numbers of people with diabetes, are:

India  
China  
USA  
Indonesia  
Japan  
Pakistan  
Russia  
Brazil  
Italy  
Bangladesh



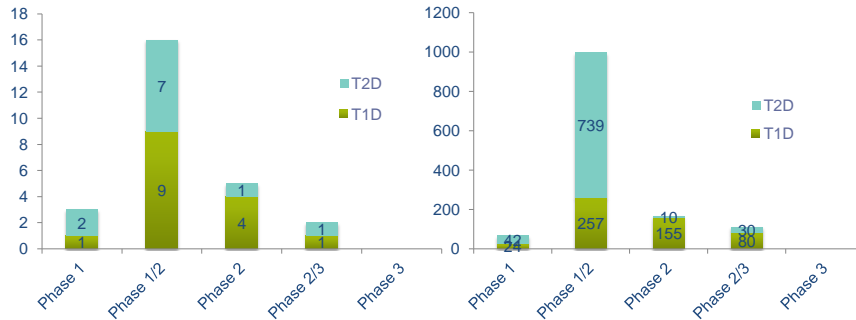
© 2012 The Actuarial Profession • www.actuaries.org.uk

23

## Cell therapy clinical trials for diabetes

Number of clinical trials\*  
~26 cell therapy trials for diabetes

Estimated enrollment target to  
exceed 1300



\*Results exclude clinical trials that have been withdrawn or terminated and those for which details are unavailable

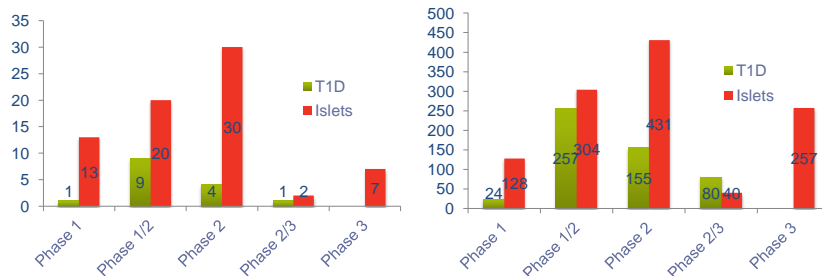
© 2012 The Actuarial Profession • www.actuaries.org.uk

24

## Rapid progress in the clinic

Number of clinical trials  
targeting  
Type 1 Diabetes using either  
stem cells (green) or islets (red)

Estimated enrollment target for  
Type 1 Diabetes using either  
stem cells (green) or islets (red)



\*Results exclude clinical trials that have been withdrawn or terminated and those for which details are unavailable

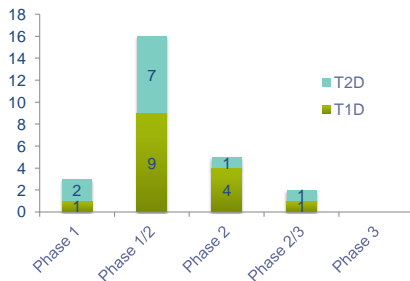
© 2012 The Actuarial Profession • www.actuaries.org.uk

25

## Probability of reaching the market?

Overall probabilities of success:

Biologics	26%*
NMEs	14%*
Cell Therapies ?	Too early to determine (but consistent safety record)



If comparable to biologics 26% current active product-pipeline would predict the number of stem cell-based products to reach the market to treat:

- Type 1 Diabetes ~ 4
- Type 2 Diabetes ~ 3

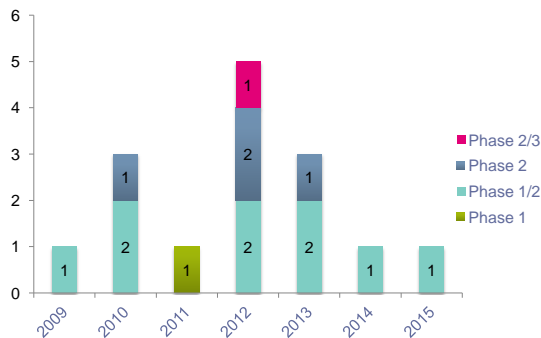
\*BIO/BioMedTracker BIO CEO & Investor Conference Feb 2011

© 2012 The Actuarial Profession • www.actuaries.org.uk

26

## Time to market?

Estimated primary completion dates for stem cell-based clinical trials targeting Type 1 Diabetes

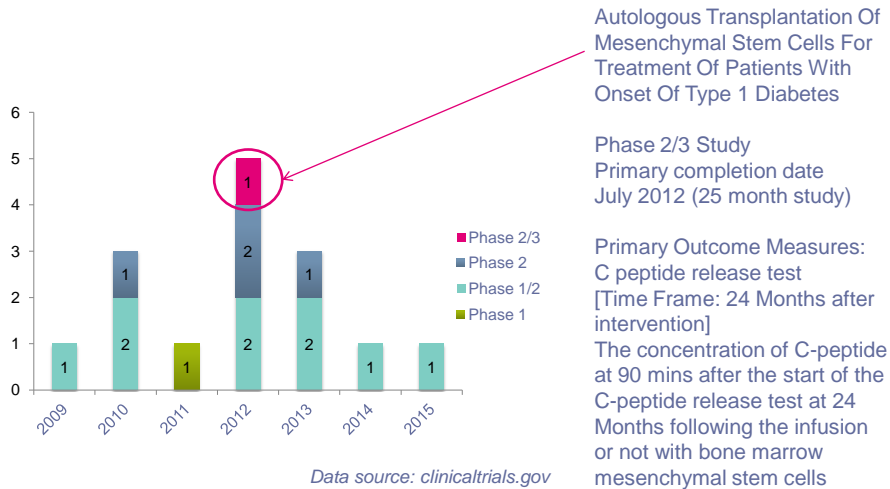


Data source: clinicaltrials.gov

© 2012 The Actuarial Profession • www.actuaries.org.uk

27

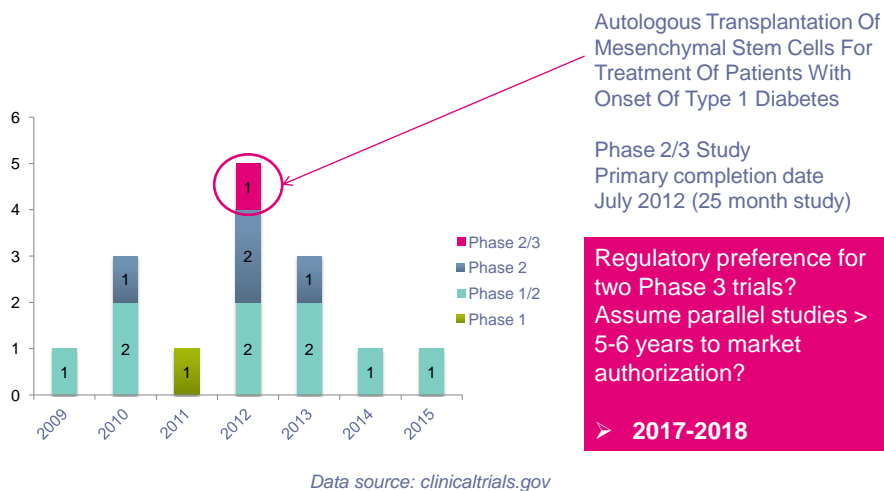
## Time to market?



© 2012 The Actuarial Profession • www.actuaries.org.uk

28

## Time to market?



© 2012 The Actuarial Profession • www.actuaries.org.uk

29

# Examples of cell therapies for diabetes

## 1. Stem Cell Educator

Zhao et al. BMC Medicine 2012, 10:3  
http://www.biomedcentral.com/1741-7015/10/3



### RESEARCH ARTICLE

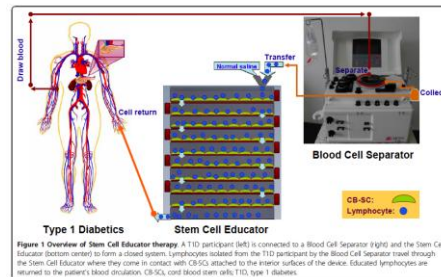
Open Access

Reversal of type 1 diabetes via islet  $\beta$  cell regeneration following immune modulation by cord blood-derived multipotent stem cells

“.... a single treatment produces lasting improvement in metabolic control. Initial results indicate Stem Cell Educator therapy reverses autoimmunity and promotes regeneration of islet  $\beta$ -cells....”

### Phase 2 – recruiting

- Estimated enrollment target 100
- Estimated study completion date Sept 2014



© 2012 The Actuarial Profession • www.actuarial.org.uk

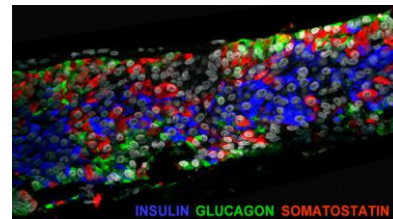
30

# Examples of cell therapies for diabetes

## 2. Embryonic stem cell – Derived Precursor Islets

Cells + Encaptra® - retrievable, non-biodegradable, vascularizing encapsulation technology that enables implanted cells to survive and differentiate into functioning islet cells.

Optimized for release of insulin in response to the recipient's blood glucose



ViaCyte intends to test Pro-Islet in diabetic patients in a Phase 1 clinical trial in the foreseeable future.

© 2012 The Actuarial Profession • www.actuarial.org.uk

31

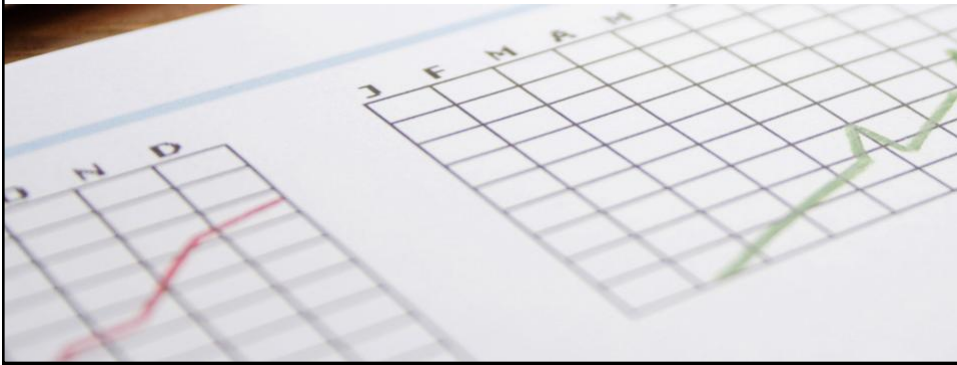


---

## The economist's perspective

---

Richard Lewney



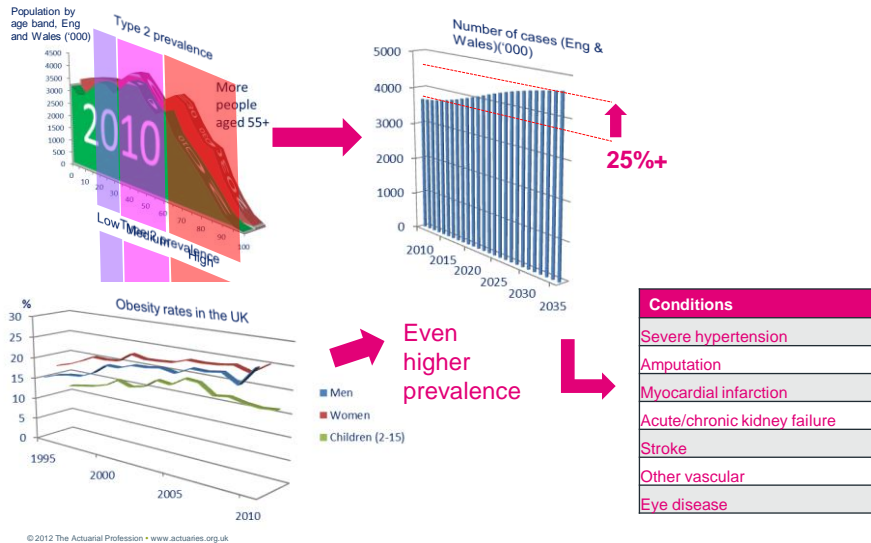
---

## The Diabetes Epidemic - quantifying the trends and impacts

---

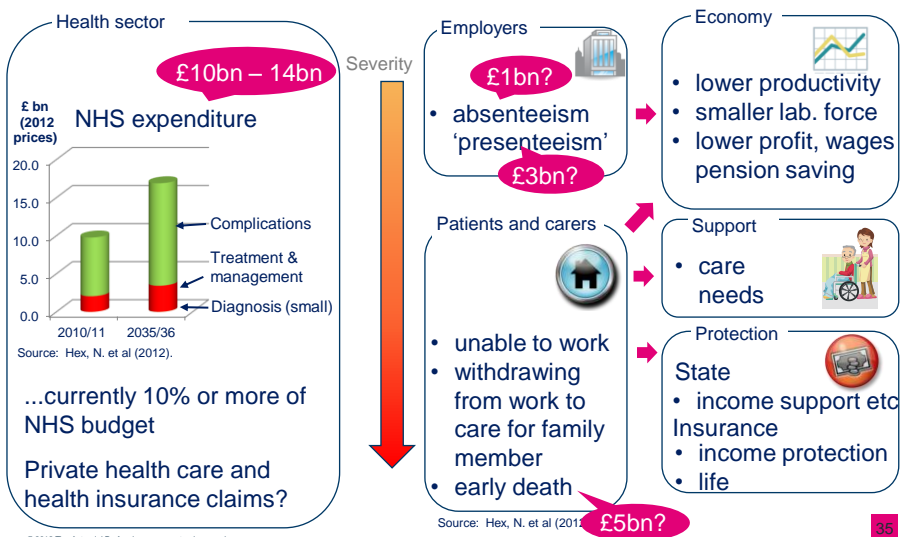
- Trends and consequences
- Impacts
- Improving the estimates

## The Diabetes Epidemic - trends and consequences



34

## The Diabetes Epidemic - impacts



35

## The Diabetes Epidemic - key sources

- Diabetes UK (2011) 'Diabetes in the UK 2011/2012:Key statistics on diabetes',
- Hex N, Bartlett C, Wright D , Taylor M, and Varley D (2012) 'Estimating the current and future costs of Type 1 and Type 2 diabetes in the UK, including direct health costs and indirect societal and productivity costs', York Health Economics Consortium Ltd, University of York, York, UK(accepted for publication in *Diabetic Medicine*)
- Kanavos, P. van den Aardweg, S. and Schurer W. (2012) 'Diabetes expenditure, burden of disease and management in 5 EU countries', LSE Health, London School of Economics

© 2012 The Actuarial Profession • www.actuaries.org.uk

36

## The actuary's perspective

Steven Baxter

HYMANS  ROBERTSON

The Spirit of Independence



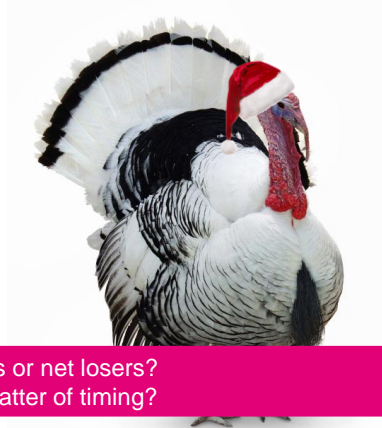
## Our first reactions

*...show me the return*

### Life industry

- If regenerative medicine reduces mortality:
  - Improved profitability life insurance
  - Increased cost of annuities?
- Increased pool of insurable lives
- Opportunities for innovative rider products

### Pensions industry



Are we net winners or net losers?  
Or, is it simply a matter of timing?

© 2012 The Actuarial Profession • www.actuaries.org.uk

38

## Targeting conditions we care about



Source: univercellmarket, National Horizon Scanning Centre,  
Alliance for Regenerative Medicine

© 2012 The Actuarial Profession • www.actuaries.org.uk

39

## Why diabetes?....

*...impacts lots of insurance products*

### Term Assurance

A typical insurer might find:

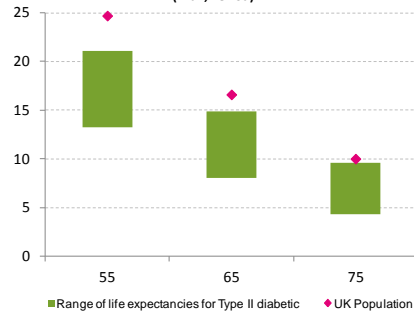
- ~1% applicants diabetic (Type I or II)
- **~1:3 declined**
- Average premium **double** that of a healthy life

### Critical Illness

- Diabetics (Type I or II) generally declined

### Annuities

Life expectancy  
(Man, Period)



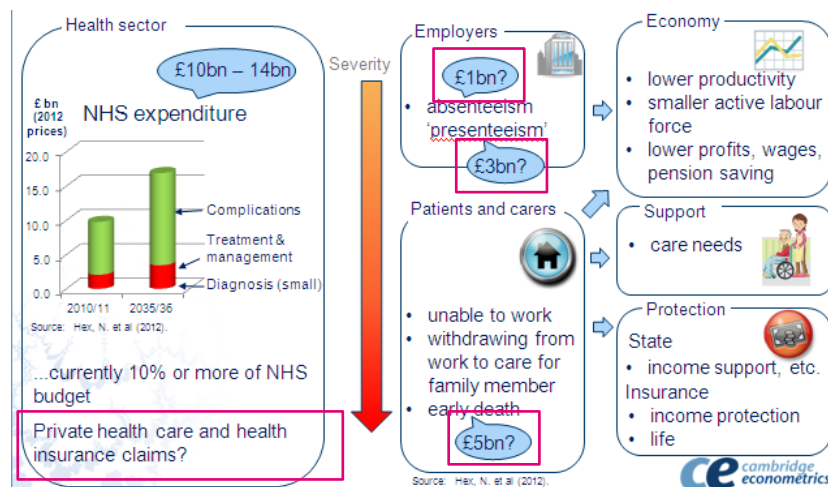
- Eligibility for enhanced annuities?

© 2012 The Actuarial Profession • www.actuaries.org.uk

Source: Development of life-expectancy tables for people with type 2 diabetes, Leal et al, European Heart Journal (2009) 30 834-839

40

## The approach we are taking...



© 2012 The Actuarial Profession • www.actuaries.org.uk

41

---

## The approach we are taking...

### *...multi-state modelling*

---

Healthy

Dead

© 2012 The Actuarial Profession • www.actuaries.org.uk

42

---

## The approach we are taking...

### *...multi-state modelling*

---

Healthy



Diagnosed  
diabetic



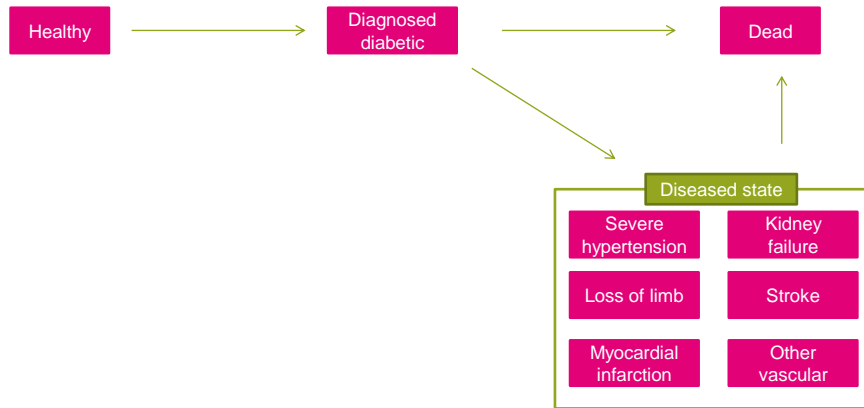
Dead

© 2012 The Actuarial Profession • www.actuaries.org.uk

43

## The approach we are taking...

### ...multi-state modelling

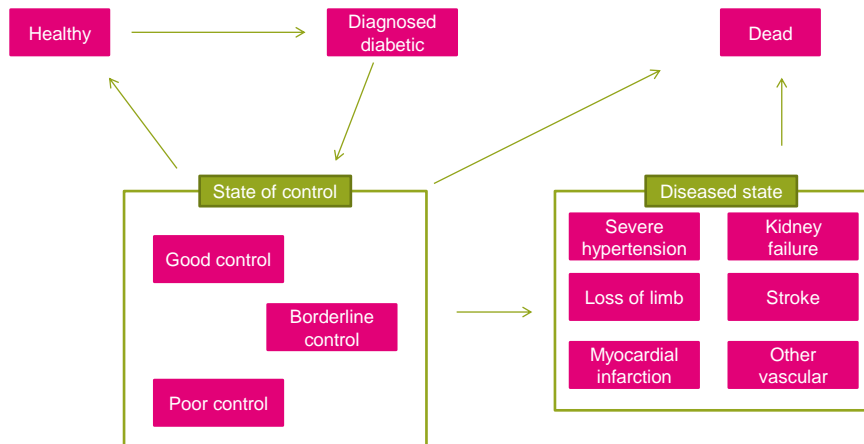


© 2012 The Actuarial Profession • www.actuaries.org.uk

44

## The approach we are taking...

### ...multi-state modelling

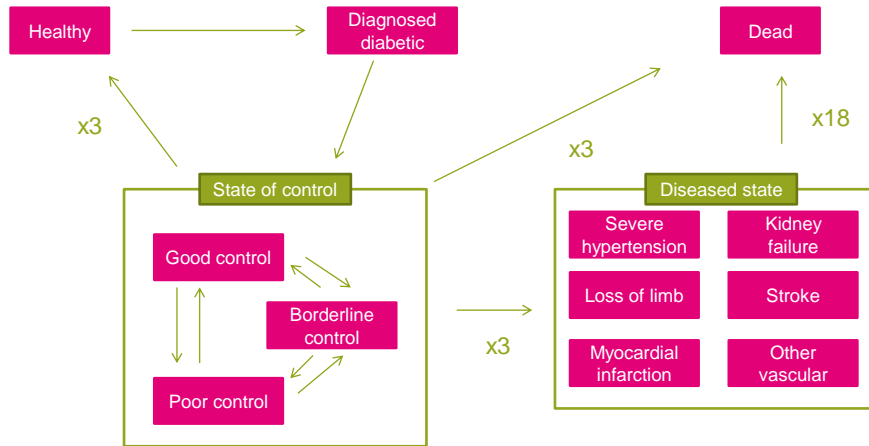


© 2012 The Actuarial Profession • www.actuaries.org.uk

45

## The approach we are taking...

*...multi-state modelling*

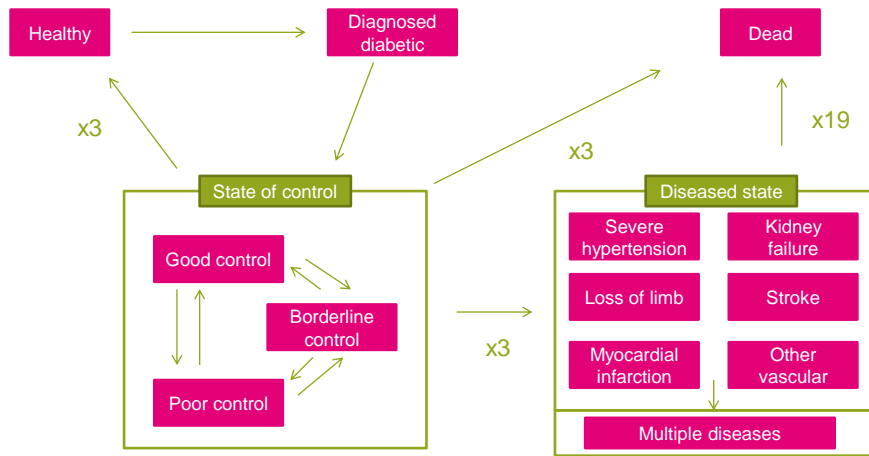


© 2012 The Actuarial Profession • www.actuaries.org.uk

46

## The approach we are taking...

*...multi-state modelling*

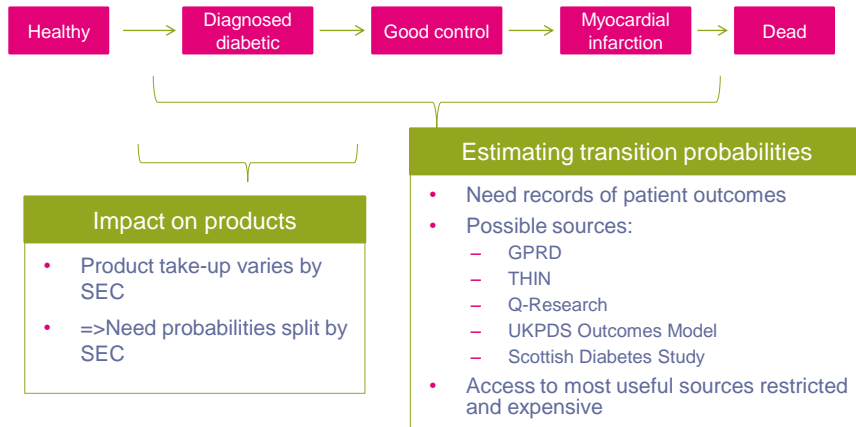


© 2012 The Actuarial Profession • www.actuaries.org.uk

47



## The challenges we are facing

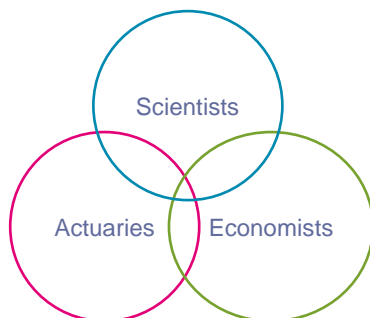


© 2012 The Actuarial Profession • www.actuaries.org.uk

48

## How you can help

### Working Group



- Share your thoughts and ideas with us today
- Do you have access to data which can help calibrate the models?
  - Co-morbidities
  - Benefit claims on health protection products
  - Costs of absenteeism
- Model-building and calibration

© 2012 The Actuarial Profession • www.actuaries.org.uk

49

## In summary

### Cell therapies will change our market place:

- First generation of cell therapies are already on the market
- Significant pipeline of products in clinical development
- Cell therapy product pipeline aligned with drivers of protection claims and longevity
- Should expect more products come to the market within 10 years
- Development supported by UK Government initiatives e.g.:
  - Cell Therapy Catapult Centre (£50m over 5yrs)
  - Technology Strategy Board (£21.5m)
  - UK Regenerative Medicine platform (£25m)
  - Catalyst Fund (£180m including provision for Regenerative Medicine)

### Possible support role for the life sector

- Development capital would accelerate products to market
  - Is the insurance and pensions sector a potential long term investor?
- Innovative insurance products and reimbursement models could support the adoption of cell therapies

Contacts: [jwoodford@munichre.com](mailto:jwoodford@munichre.com)  
[richard.lewney@camecon.com](mailto:richard.lewney@camecon.com)

[cprescott@biolatrix.com](mailto:cprescott@biolatrix.com)  
[steven.baxter@hymans.co.uk](mailto:steven.baxter@hymans.co.uk)

© 2012 The Actuarial Profession • www.actuaries.org.uk

50

## Questions or comments?

Expressions of individual views by members of The Actuarial Profession and its staff are encouraged.

The views expressed in this presentation are those of the presenter.



© 2012 The Actuarial Profession • www.actuaries.org.uk

51