

The Actuarial Profession
making financial sense of the future

CMI SAPS Mortality Update



Richard Campbell

Current Issues in Pensions 2011

18 October 2011

© 2010 The Actuarial Profession • www.actuaries.org.uk

Agenda

- 2002-2009 mortality experience (data to 30 June 2010)
- Analysis of mortality improvements
- Analysis of experience by industry
- Future work
- Updates to the CMI Mortality Projections Model and Library

© 2011 The Actuarial Profession • www.actuaries.org.uk

1

Agenda

- 2002-2009 mortality experience (data to 30 June 2010)
- Analysis of mortality improvements
- Analysis of experience by industry
- Future work
- Updates to the CMI Mortality Projections Model and Library

© 2011 The Actuarial Profession • www.actuaries.org.uk

2

2002-2009 mortality experience: overview

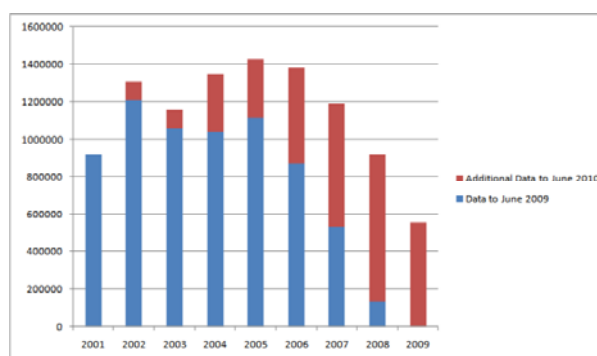
- WP51 published in May 2011
- Underlying data files made available
- Substantial volumes of new data – nearly 40% increase in exposure over latest 8-year period
- PPF data was included for the first time

© 2011 The Actuarial Profession • www.actuaries.org.uk

3

2002-2009 mortality experience: data by year

Male pensioners



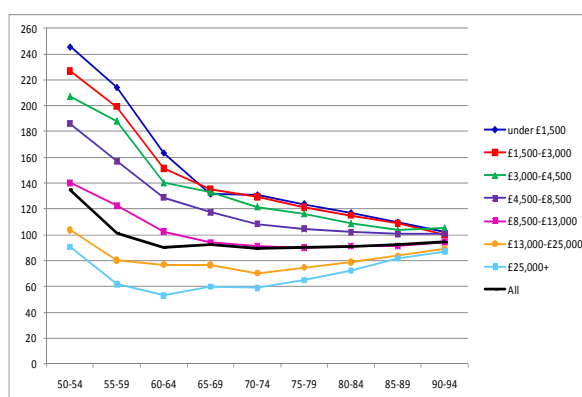
N.B. Additional data for 2001 may have been submitted up to June 2010 but analysis only covered 2002-2009. Similarly some 2009 data may have been submitted up to June 2009 but the analysis only covered 2001-2008.

© 2011 The Actuarial Profession • www.actuaries.org.uk

4

2002-2009 mortality experience: amounts bands

Male Pensioners Amounts compared against S1PMA

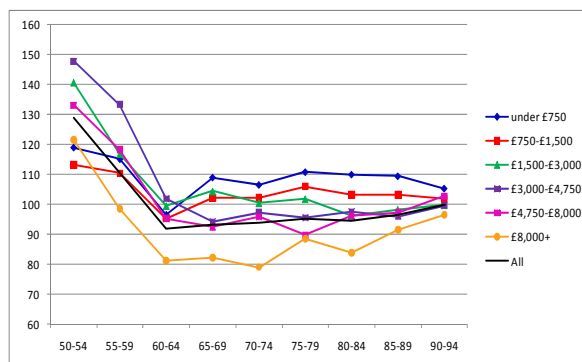


© 2011 The Actuarial Profession • www.actuaries.org.uk

5

2002-2009 mortality experience: amounts bands

Female Pensioners Amounts compared against S1PFA

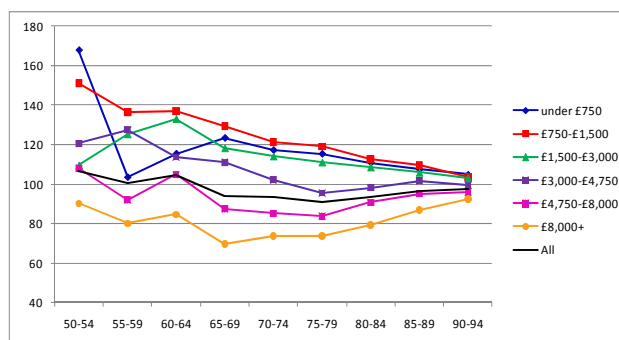


© 2011 The Actuarial Profession • www.actuaries.org.uk

6

2002-2009 mortality experience: amounts bands

Female Dependants Amounts compared against S1DFA

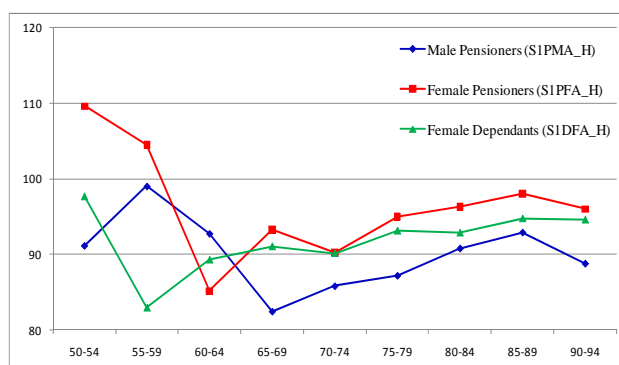


© 2011 The Actuarial Profession • www.actuaries.org.uk

7

2002-2009 mortality experience: “Heavy” tables

SAPS Amounts compared against “Heavy” tables

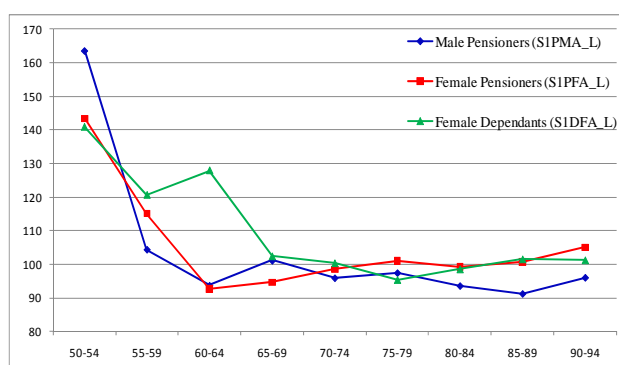


© 2011 The Actuarial Profession • www.actuaries.org.uk

8

2002-2009 mortality experience: “Light” tables

SAPS Amounts compared against “Light” tables



© 2011 The Actuarial Profession • www.actuaries.org.uk

9

Agenda

- 2002-2009 mortality experience (data to 30 June 2010)
- Analysis of mortality improvements
- Analysis of experience by industry
- Future work
- Updates to the CMI Mortality Projections Model and Library

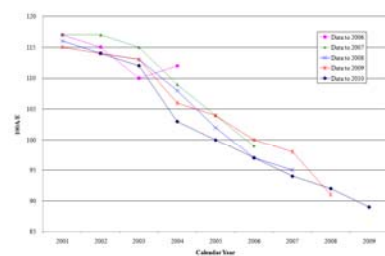
© 2011 The Actuarial Profession • www.actuaries.org.uk

10

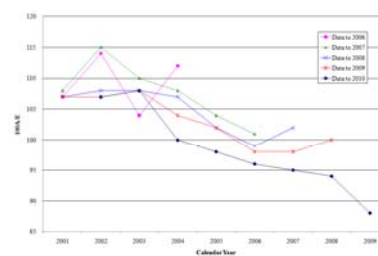
Mortality improvements: trends

- Shown trends in mortality in annual experience papers

Male Pensioner Lives compared against PNML00



Female Pensioner Lives compared against PNFL00



© 2011 The Actuarial Profession • www.actuaries.org.uk

11

Mortality improvements: methodology

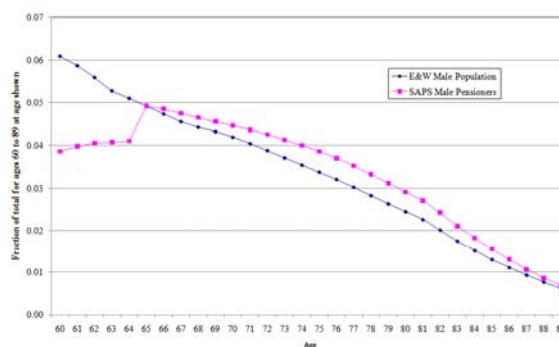
- Commonly used to compare populations with different age structures

$$SMR_y = \frac{\sum (Reference Exposure_x \times Dataset m_x)}{\sum (Reference Exposure_x \times Reference m_x)} \times 100$$

- Age range of 60-89 used for all datasets analysed

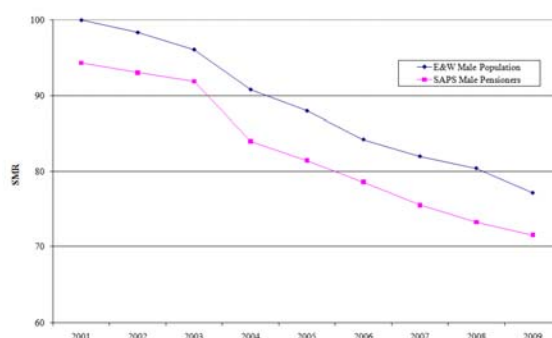
Mortality improvements: age structures (males)

Age distribution of SAPS Pensioners and E&W Population datasets – Males



Mortality improvements: ONS vs SAPS (males)

SMRs for SAPS Pensioners and E&W Population – Males



© 2011 The Actuarial Profession • www.actuaries.org.uk

14

Mortality improvements: ONS vs SAPS (males)

Improvement in SMRs for SAPS Pensioners and E&W Population – Males

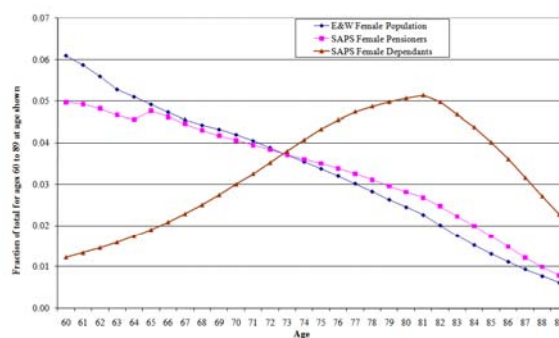


© 2011 The Actuarial Profession • www.actuaries.org.uk

15

Mortality improvements: age structures (females)

Age distribution of SAPS and E&W Population datasets – Females

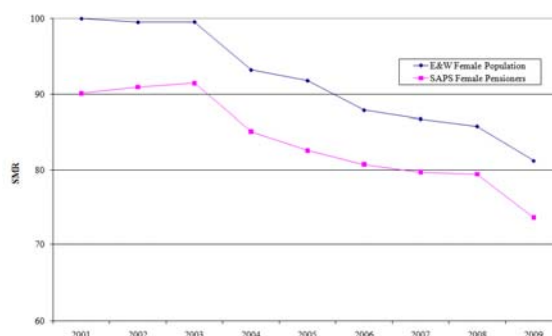


© 2011 The Actuarial Profession • www.actuaries.org.uk

16

Mortality improvements: ONS vs SAPS (females)

SMRs for SAPS Pensioners and E&W Population – Females

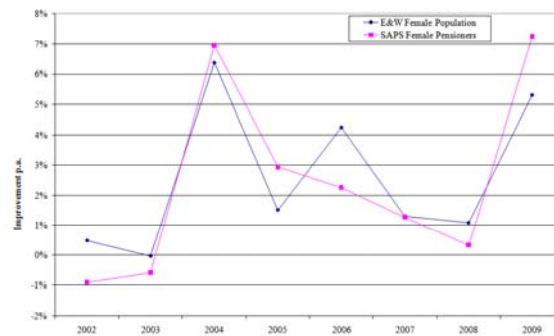


© 2011 The Actuarial Profession • www.actuaries.org.uk

17

Mortality improvements: ONS vs SAPS (females)

Improvement in SMRs for SAPS Pensioners and E&W Population – Females



© 2011 The Actuarial Profession • www.actuaries.org.uk

18

Mortality improvements: ONS vs SAPS (females)

SMRs for SAPS Dependants and E&W Population – Females

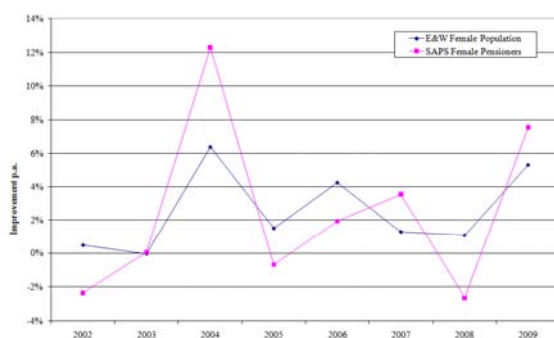


© 2011 The Actuarial Profession • www.actuaries.org.uk

19

Mortality improvements: ONS vs SAPS (females)

Improvement in SMRs for SAPS Dependants and E&W Population – Females

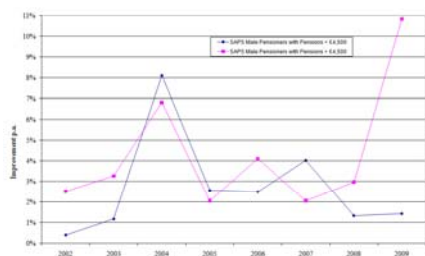


© 2011 The Actuarial Profession • www.actuaries.org.uk

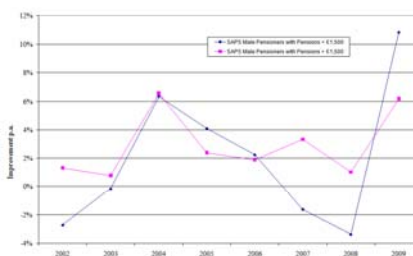
20

Mortality improvements: SAPS high vs low

Male Pensioners



Female Pensioners

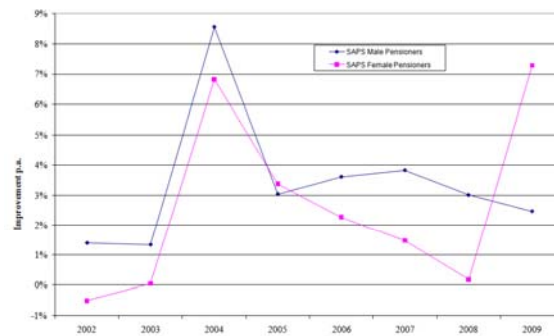


© 2011 The Actuarial Profession • www.actuaries.org.uk

21

Mortality improvements: SAPS males vs females

Improvement in SMRs for SAPS Males and Females



© 2011 The Actuarial Profession • www.actuaries.org.uk

22

Agenda

- 2002-2009 mortality experience (data to 30 June 2010)
- Analysis of mortality improvements
- Analysis of experience by industry
- Future work
- Updates to the CMI Mortality Projections Model and Library

© 2011 The Actuarial Profession • www.actuaries.org.uk

23

Industry analysis: overview

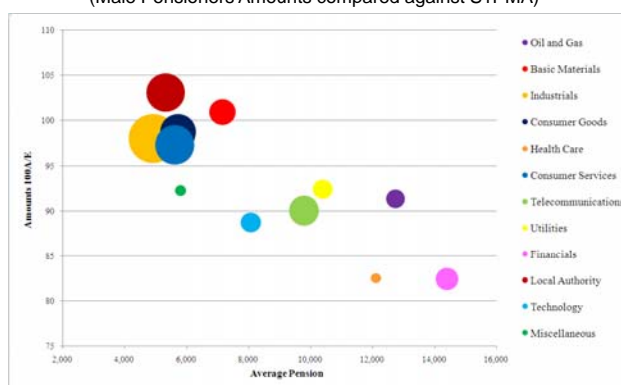
- Last analysis of experience by industry in WP29 (Oct 2007)
- Current paper will update this analysis and provide additional information about variation within industry categories
- Hope to issue latest analysis in Q4 2011

© 2011 The Actuarial Profession • www.actuaries.org.uk

24

Industry analysis: overall mortality by industry *Draft*

Relative mortality experience by industry classification and average pension
(Male Pensioners Amounts compared against S1PMA)



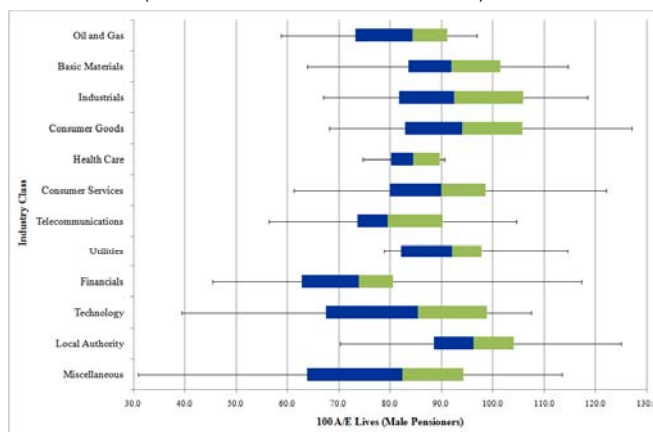
© 2011 The Actuarial Profession • www.actuaries.org.uk

25

Industry analysis: variation – box & whisker plots

Draft

Variation of experience within industry classifications
(Distribution of scheme 100A/Es – Males)



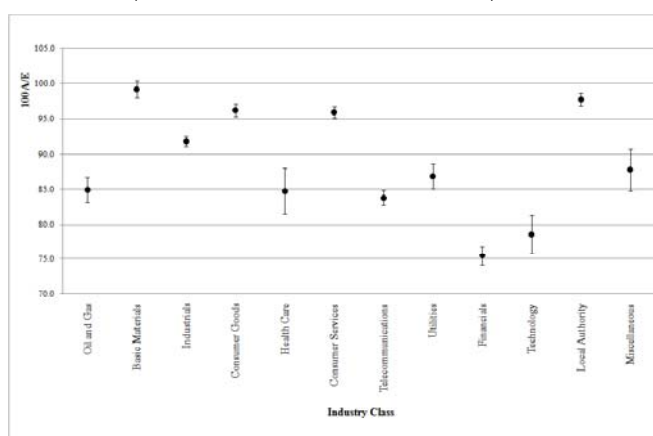
© 2011 The Actuarial Profession • www.actuaries.org.uk

26

Industry analysis: variation – confidence intervals

Draft

Variation of experience within industry classifications
(Distribution around overall 100A/E – Males)



© 2011 The Actuarial Profession • www.actuaries.org.uk

27

Agenda

- 2002-2009 mortality experience (data to 30 June 2010)
- Analysis of mortality improvements
- Analysis of experience by industry
- **Future work**
- Updates to the CMI Mortality Projections Model and Library

Future/other work:

- Currently working on next annual experience analysis (using data to 30 June 2011)
- Extending industry analysis – effect of pension amount and industry classification
- Considering “S2” graduations
- Late reported deaths – suitability of current adjustment

Agenda

- 2002-2009 mortality experience (data to 30 June 2010)
- Analysis of mortality improvements
- Analysis of experience by industry
- Future work
- Updates to the CMI Mortality Projections Model and Library

© 2011 The Actuarial Profession • www.actuaries.org.uk

30

The CMI Mortality Projections Model Advancing the annual release date

- Previous versions released in late November each year due to availability of ONS data
- Not enough time for users to make use of the Model that year-end
- Much of the ONS data released by mid-July, with the exception of high-age population estimates
- WP54 proposed to mirror ONS process to produce high-age population estimates
- Proposal back-tested and showed no material loss of accuracy
- All feedback received to the proposal was supportive
- CMI_2011 released in September 2011.

© 2011 The Actuarial Profession • www.actuaries.org.uk

31

The CMI Mortality Projections Model 2011 Update - Release of CMI_2011

An updated version of the Model & User Guide

- Updated Initial Rates of Mortality Improvement for 2010 data
- No other material change from CMI_2010
- Described in CMI Working Paper 55.

Default values for Core parameters of CMI_2011

- Initial Rates of Mortality Improvement
 - Use E&W population data to 2010; estimate rates for 2008
 - Maintained methodology used for CMI_2010
- Convergence Period
 - Maintained periods / rules as for CMI_2010.

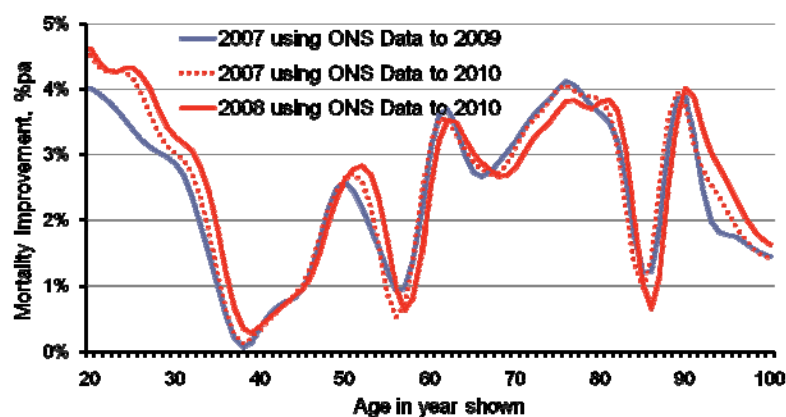
© 2010 The Actuarial Profession • www.actuaries.org.uk

32

CMI_2011: Emerging Patterns of Mortality Change Change arising from incorporation of data for 2010

Annual rates of mortality improvement, by age, year and data

P-Spline models; population of England & Wales; males



© 2010 The Actuarial Profession • www.actuaries.org.uk

33

The CMI Mortality Projections Model

Change arising from incorporation of data for 2010

Addition of data leads to revision of estimates

- Revised estimates show modest shape changes by age
- Revisions fall within expected range
- ... and show methodology gives relatively stable results

Cohort EoLs: CMI_2011 vs CMI_2010 on like-for-like basis

- Generally slightly lower for CMI_2011 for males
- ... and slightly higher for females
- Differences less than $\pm 0.5\%$ up to age 90
- $[+1\%$ on long-term rate increases EoL by 5% at age 65].

© 2010 The Actuarial Profession • www.actuaries.org.uk

34

The CMI Mortality Projections Library

- v1.2 published in June 2011
- Work now underway on v1.3 which will contain the following additional projections:
 - Sample P-Spline age-cohort and Lee-Carter projections using ONS data to 2010
 - Same set of sample projections from CMI_2011 as for CMI_2009 and CMI_2010
 - ONS 2010-based national population projections
- Anticipated that v1.3 will be published in November

© 2010 The Actuarial Profession • www.actuaries.org.uk

35

AOB

Questions?



© 2010 The Actuarial Profession • www.actuaries.org.uk

36

The Actuarial Profession
making financial sense of the future

CMI SAPS Mortality Update



Deborah Cooper

Current Issues in Pensions 2011

6 October 2011

© 2010 The Actuarial Profession • www.actuaries.org.uk