



SAPS Investigation

Brian Wilson
26 April 2007

Summary of Presentation

1. Changes in organisation and operational changes since last year
2. Highlights of draft WP (March 2007), based on data received to end-June 2006
3. Moving on to graduations

Changes in organisation and operational changes since last year

Reporting Lines etc

- Now a CMI Committee – the SAPS Mortality Committee
- Report to CMI Executive Committee
- Keep Pension Board of Actuarial Profession informed via Technical Support & Research Committee
- Now have Users Forum

CMI Members

- Firms of consultants (and possibly others) who contribute financially towards the investigation are **CMI members**
- Firms that supply data but who do not contribute are **not** CMI members
- **CMI members** have some advantages of membership

Scheme of Work for 2007

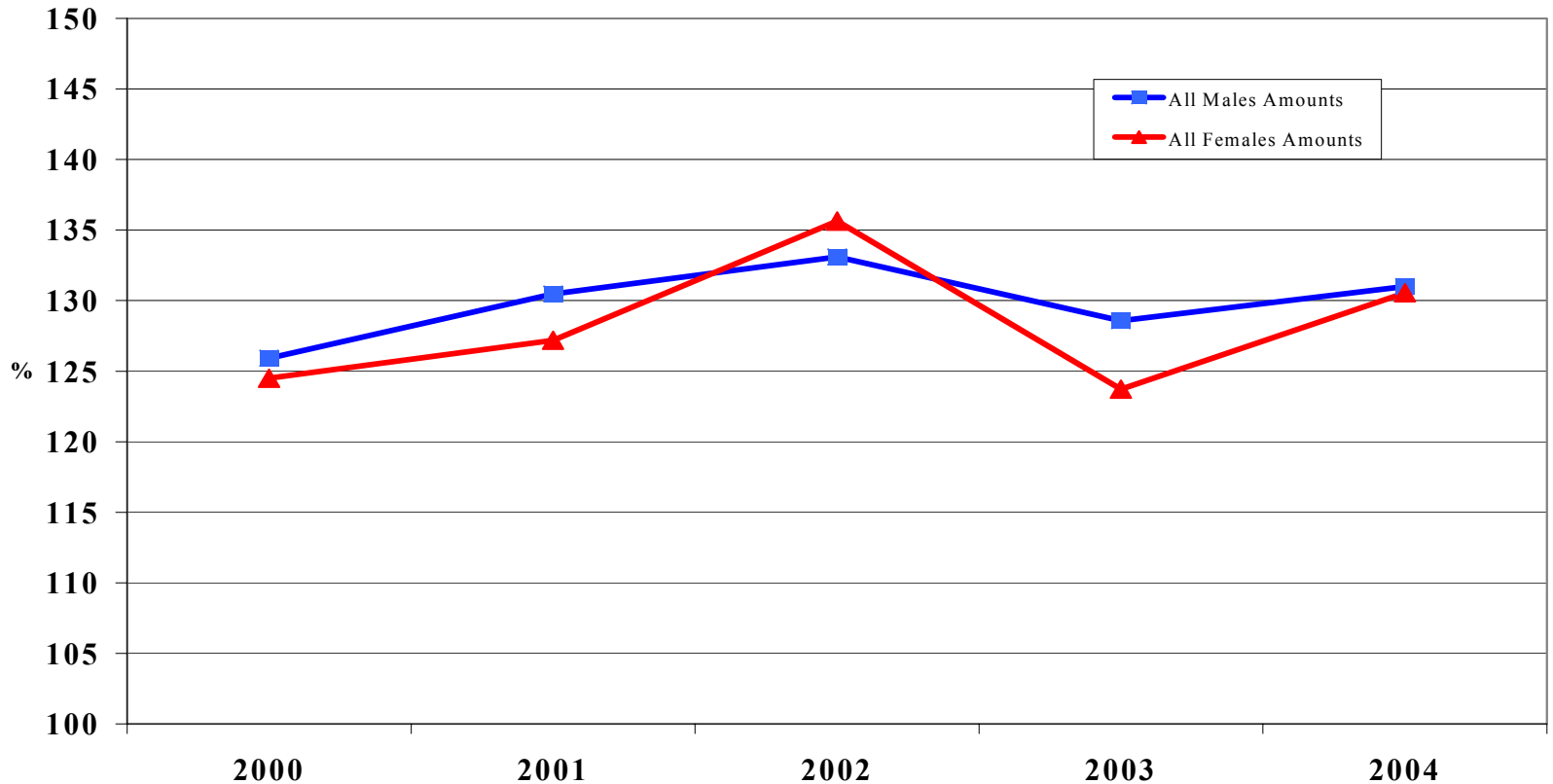
1. Draft Working Paper analysing data received to 30/6/06
2. Graduations of data received to 31/3/07
3. Retailers' mortality study
4. Working Paper analysing data received to 30/6/07

Draft Working Paper (March 2007)

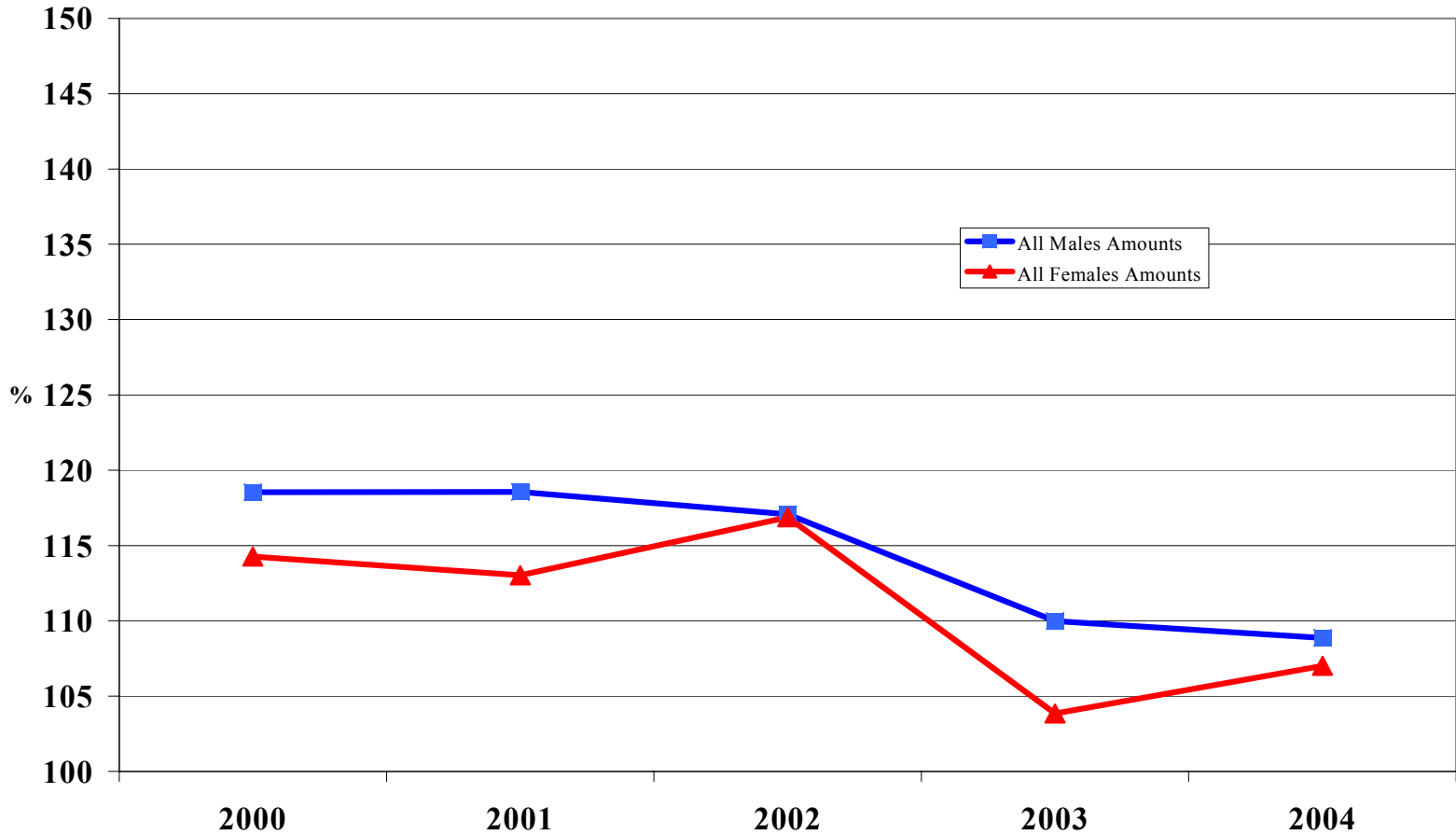
Draft Working Paper (March 2007)

- Based on data received to end-June 2006
- Significant data problems delayed publication
- Now sorted
- Issued as draft to firms contributing to costs
- Feedback invited
- Subject to confidentiality clause
- To be issued in final September 2007

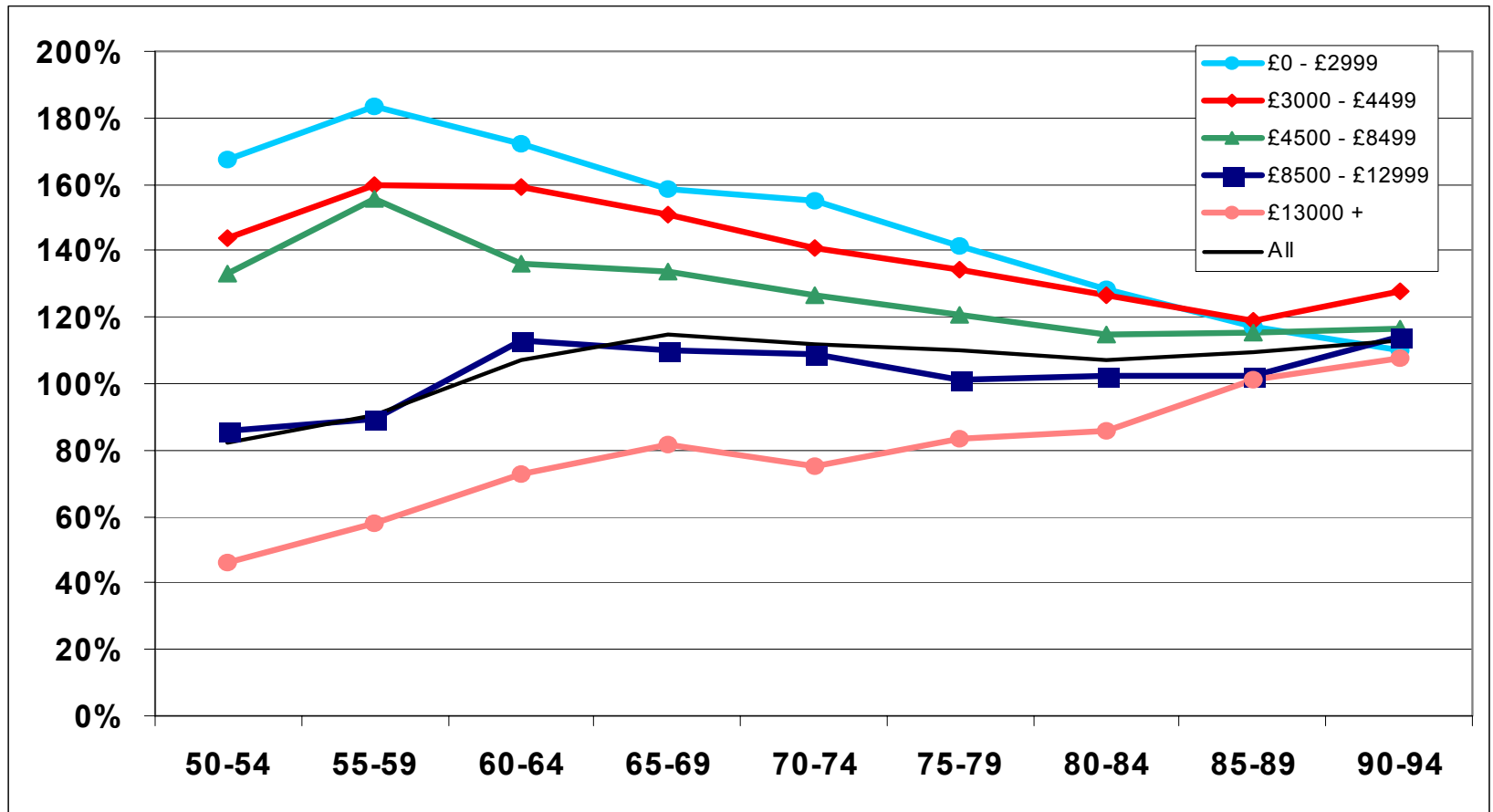
The Big Picture – 100A/E on PxA92sc



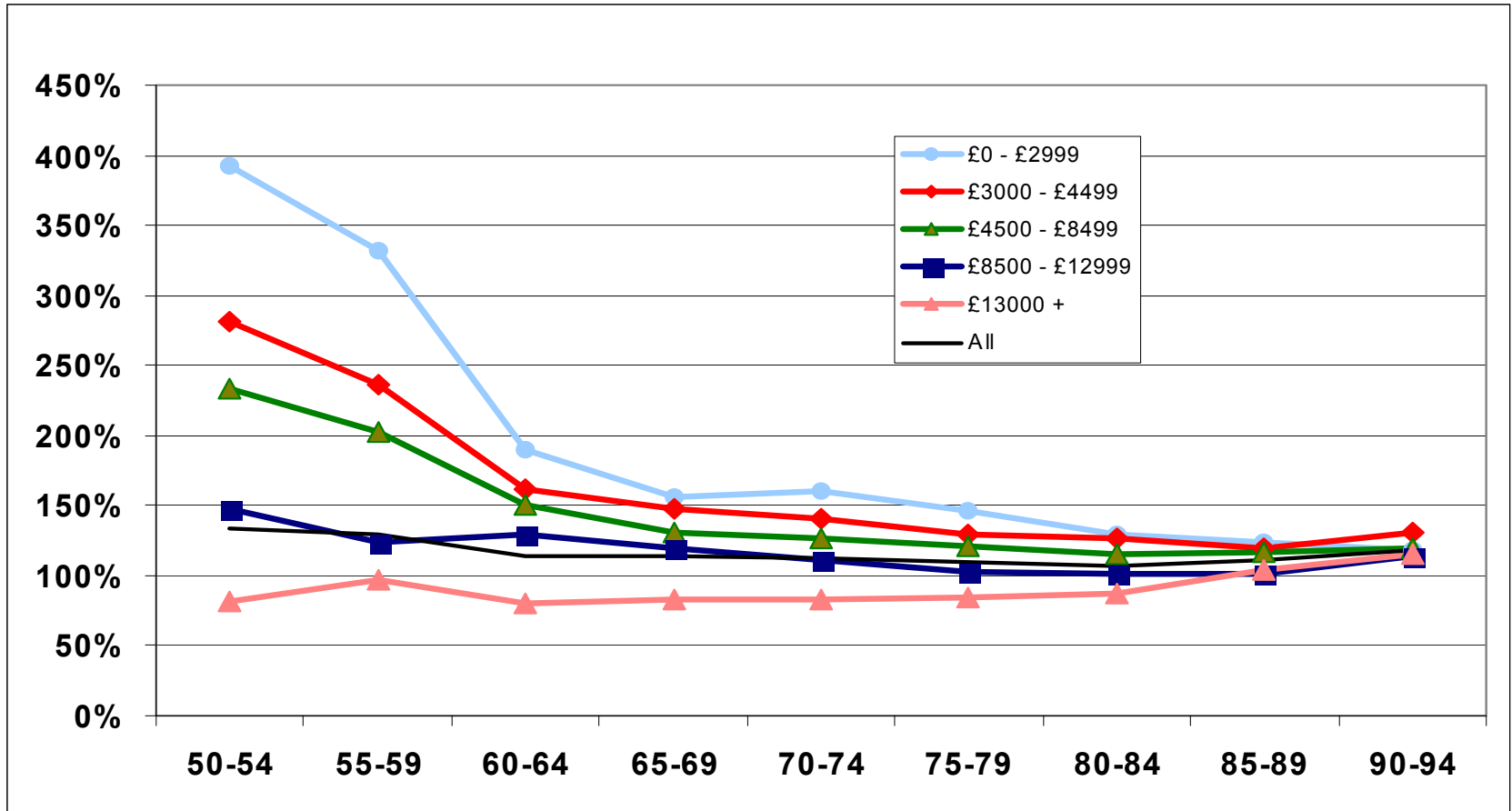
The Big Picture - 100A/E on PNxA00



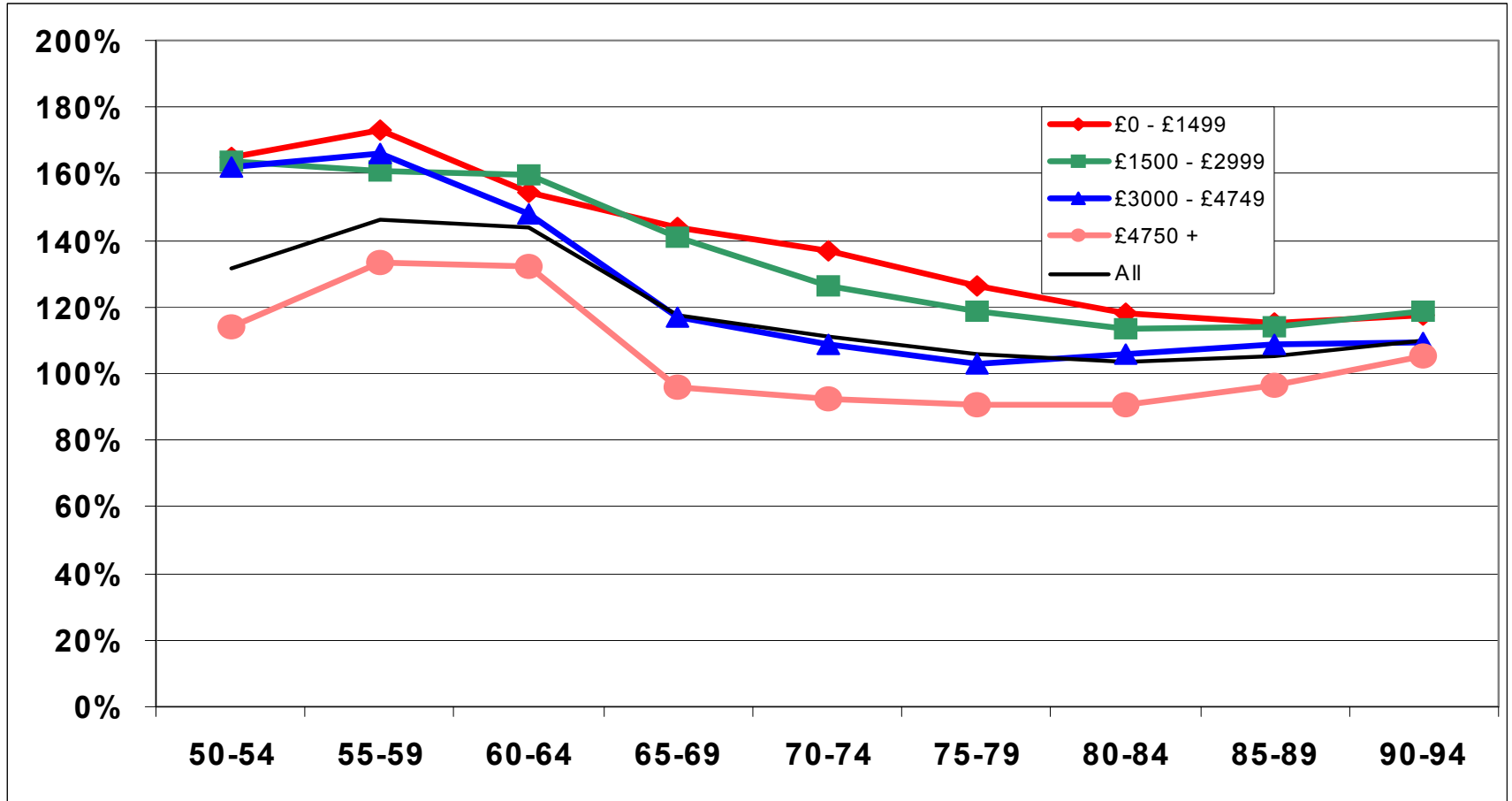
100A/E All Males Amounts on PCMA00



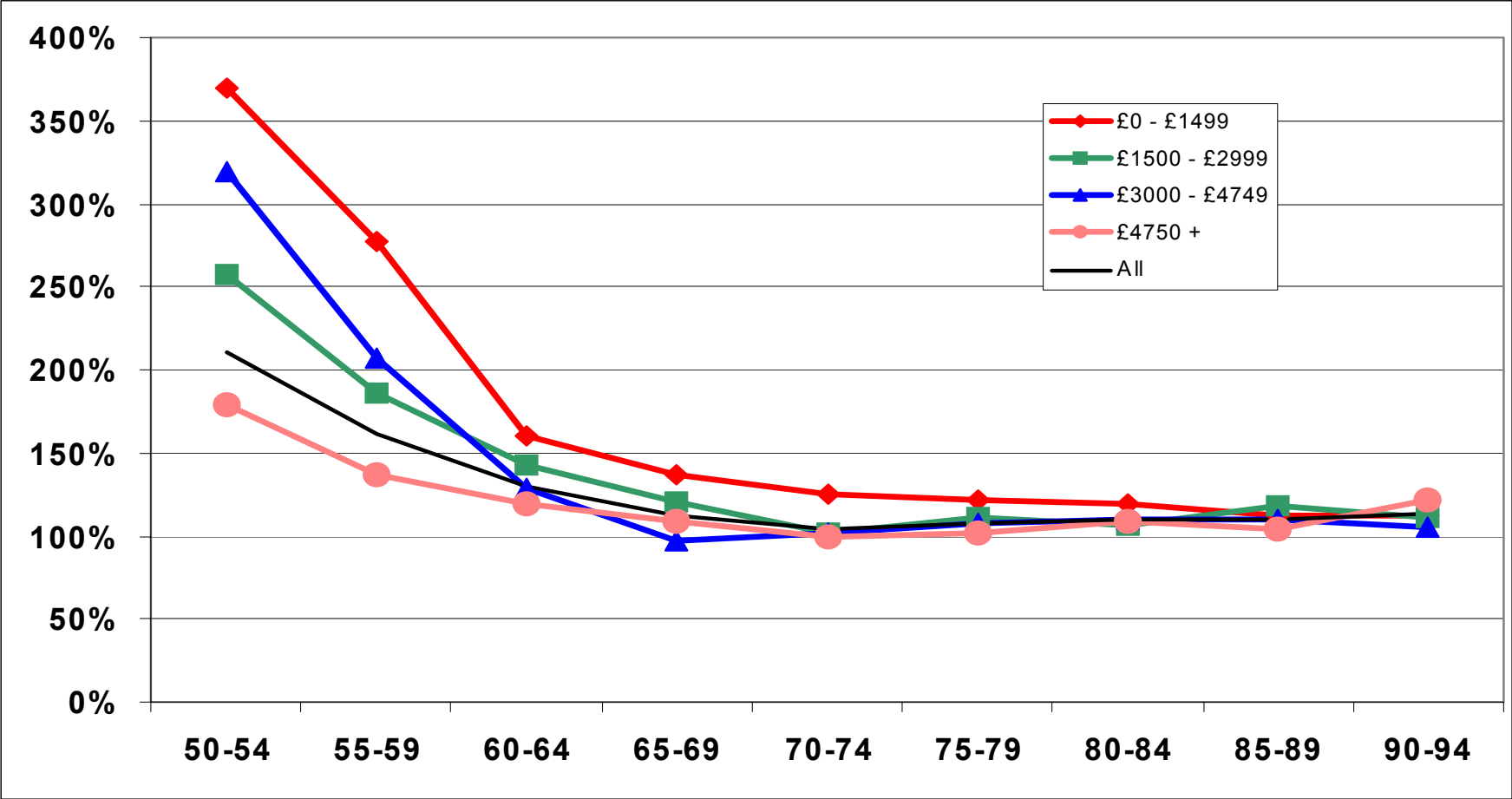
100A/E Normal Males Amt PNMA00



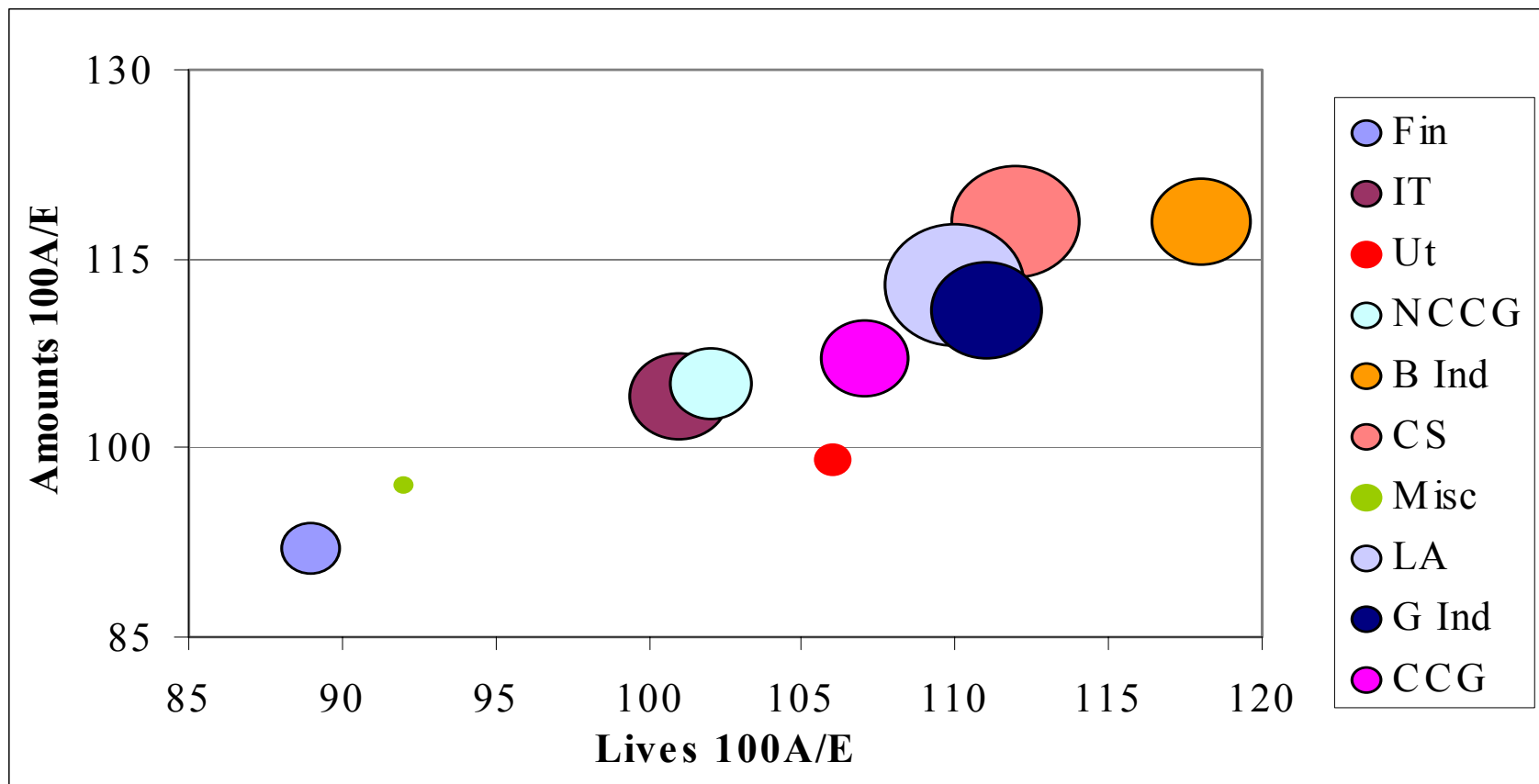
100A/E All Females Amt on PCFA00



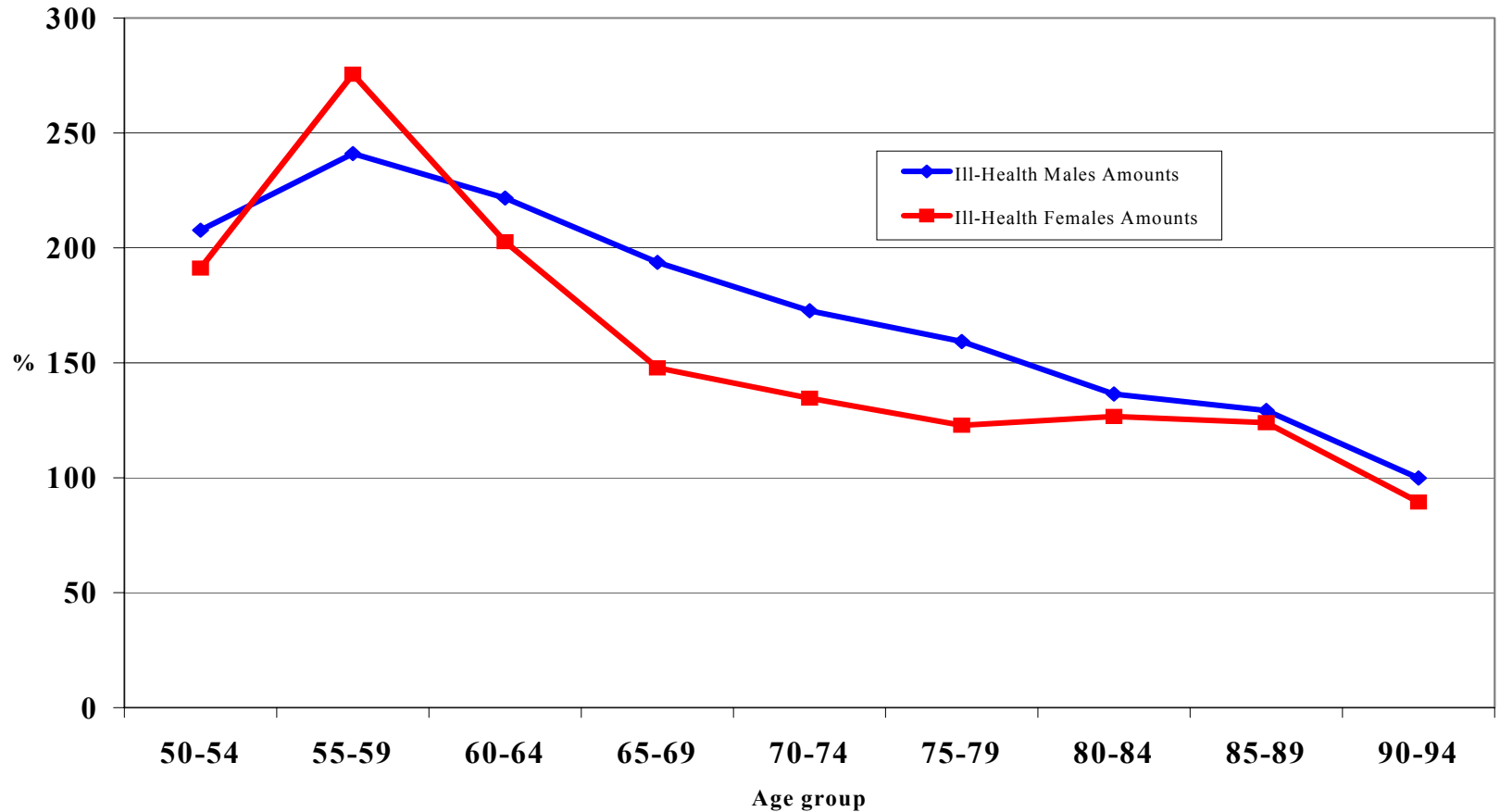
100A/E Normal Females Amt PNFA00



Analysis by Industry - Males

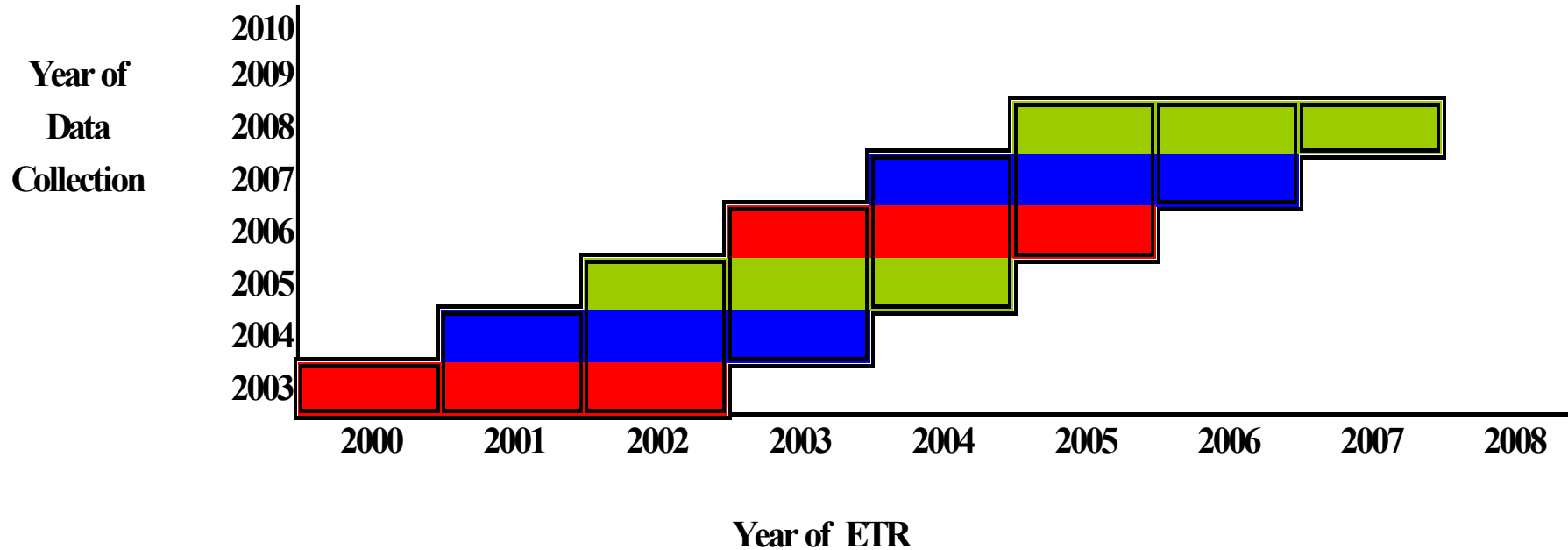


100A/E III-Health Amounts on PExA00

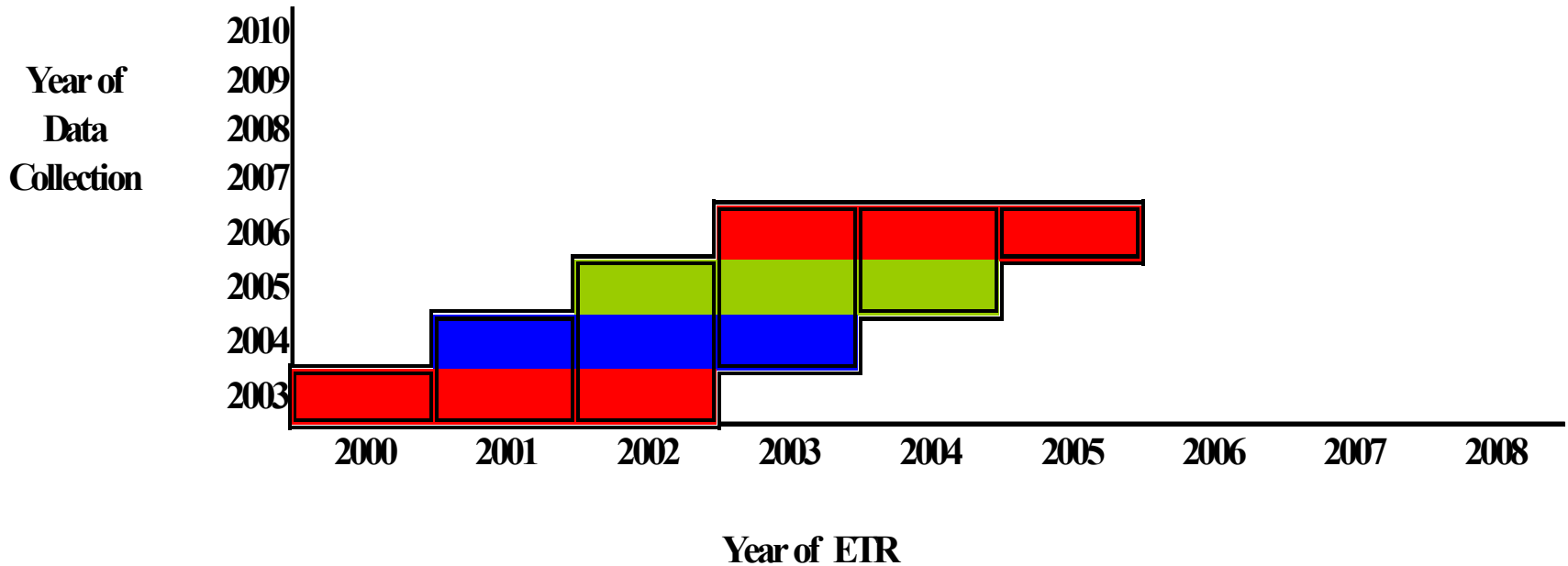


Moving on to graduations

Receipt of Data – In Theory - 1



Receipt of Data – In Theory - 2



What graduations are wanted?

So far the following have been requested:

- All male all data
- All female all data (excluding dependants?)
- Each of the above for high and low pensions
- Male and female ill-health
- Female dependants

WHAT DO YOU WANT?