



Partnership at Work™

Presentation For



IAA FINANCIAL RISKS AND ERM SECTION
SECTION DES RISQUES FINANCIERS ET GRE DE L'AAI

C11 Workshop: Investment Capital Charges: A Top-Down Observable Price Approach

June 2016

The material contained in this presentation has been prepared solely for informational purposes by New England Asset Management, Inc. ("NEAM, Inc."), and is not to be distributed outside of the organization to which it is presented. The material is based on sources believed to be reliable and/or from proprietary data developed by NEAM, but we do not represent as to its accuracy or its completeness. This is not an offer to buy or sell any security or financial instrument. Certain assumptions, including tax assumptions, may have been made which have resulted in any returns detailed herein. Past performance results are not necessarily indicative of future performance. Changes to the assumptions, including valuations or cash flows of any instrument, may have a material impact on any results. Please consult with your tax experts before relying on this material. Additional information is available upon request. This document and its contents are proprietary to NEAM, Inc. They were prepared for the exclusive use of your company. Neither this document nor its contents are to be given or discussed with anyone other than employees, directors, trustees or auditors of your company without our prior written consent.

Objectives



- Share the "Observable Price" approach to evaluate investment capital charges (VaR)
- Consider implications for portfolio management & asset allocation

Agenda



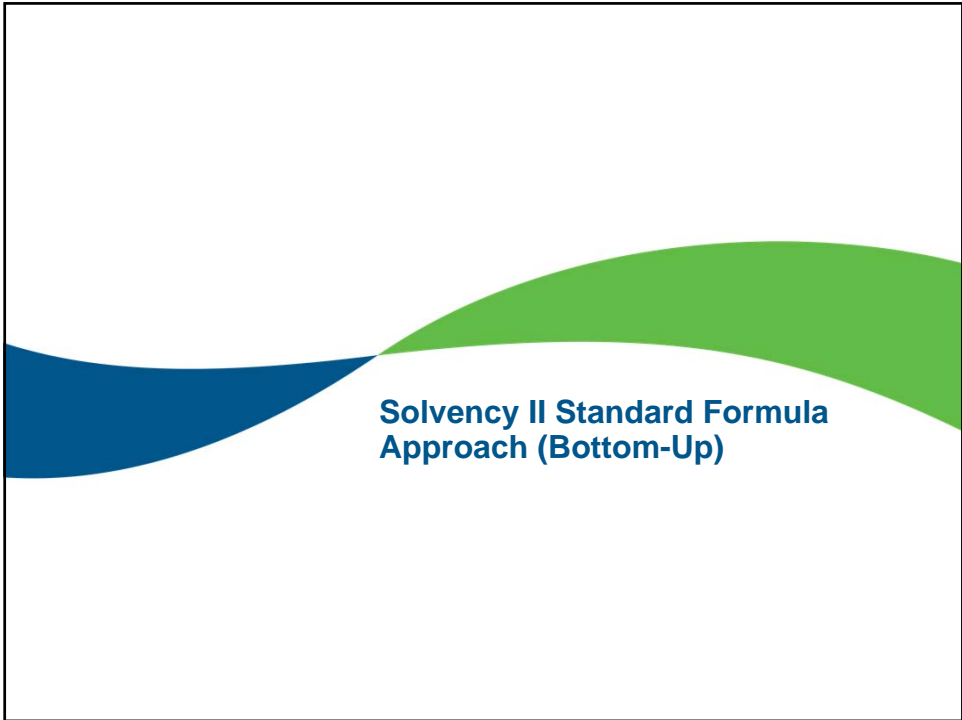
- Context
- Solvency II Standard Formula Overview
- NEAM Observable Price Approach
- Case Study – U.S. Life Industry
- De-mystify Correlations

Context

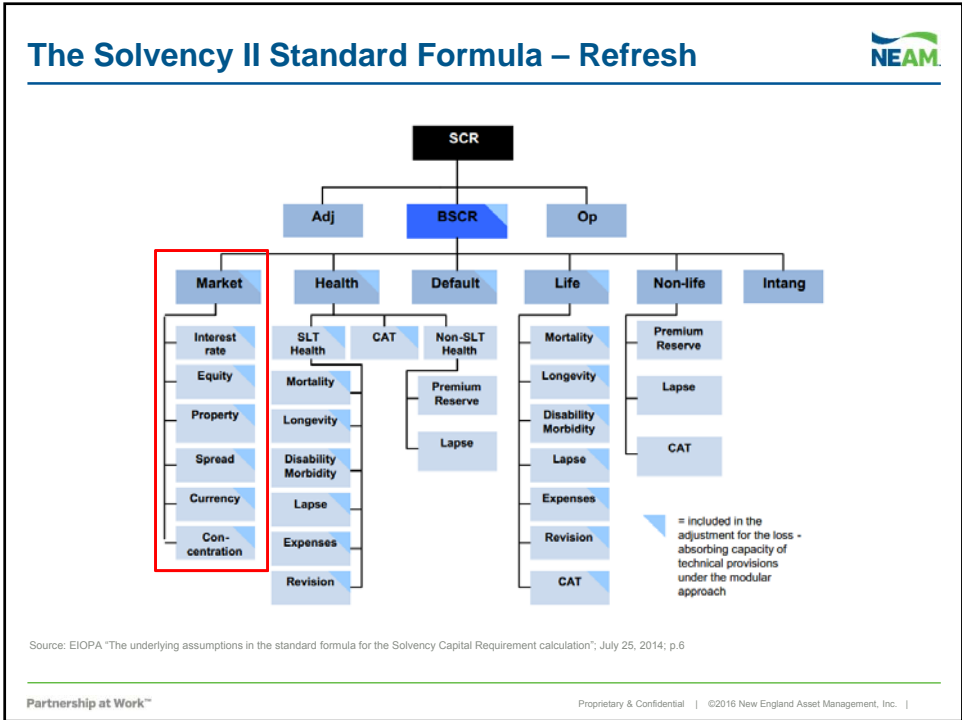


- Various views of capital requirement: regulatory vs. rating agency vs. economic
- Solvency II capital requirement (one-year 99.5% VaR):
 - Standard model formula vs. internal capital model
 - Asset risk charge

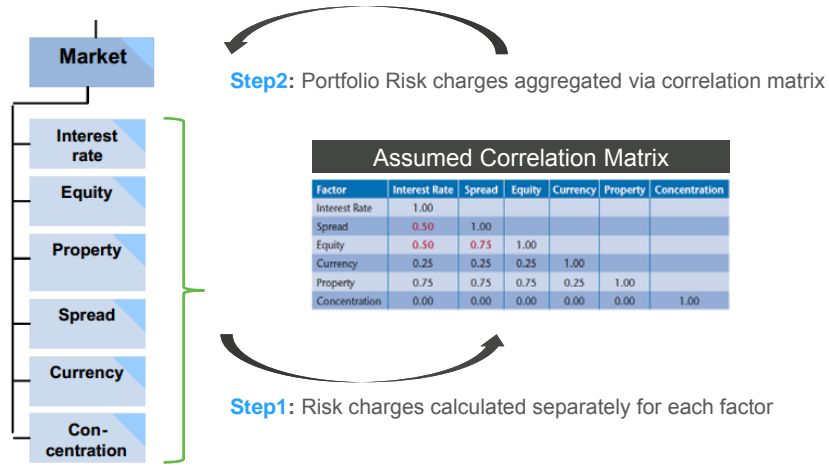
Motivation – Understand why the clearly-defined “1-year 99.5%” VaR estimate can vary significantly among different methods?



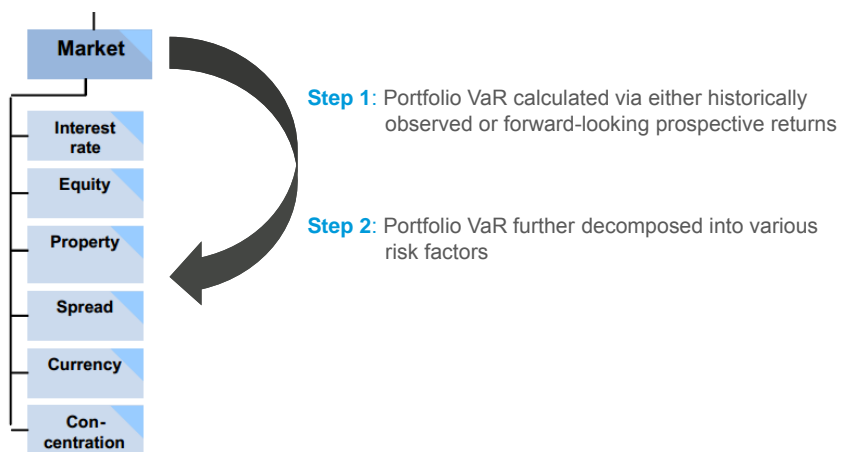
Solvency II Standard Formula Approach (Bottom-Up)

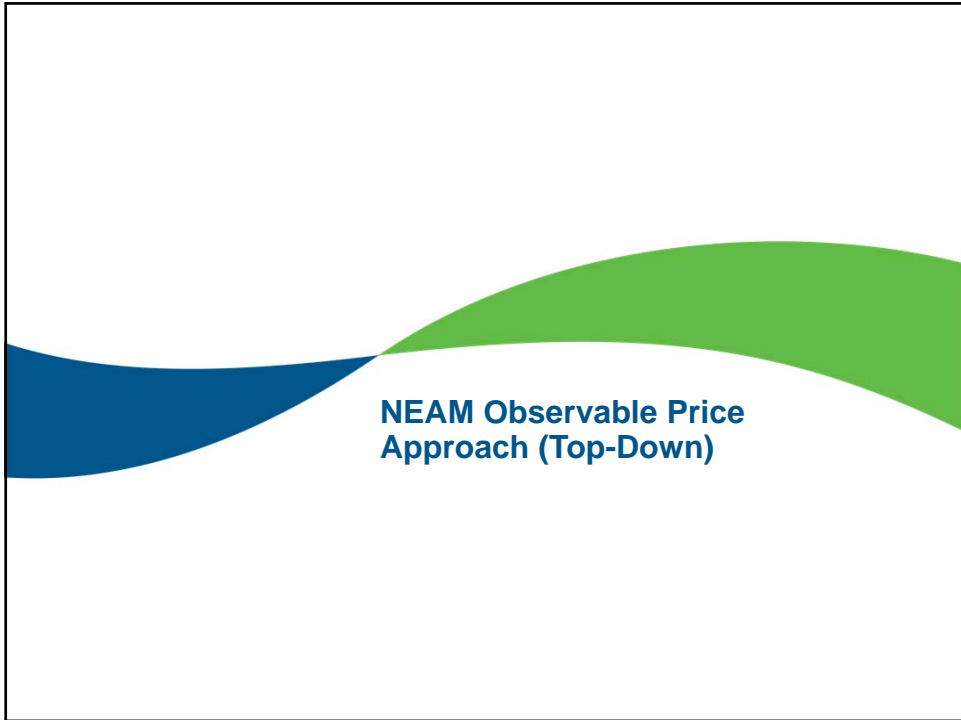


Solvency II



Observable Price:





Underlying Data – Historical Observable Total Return Time Series



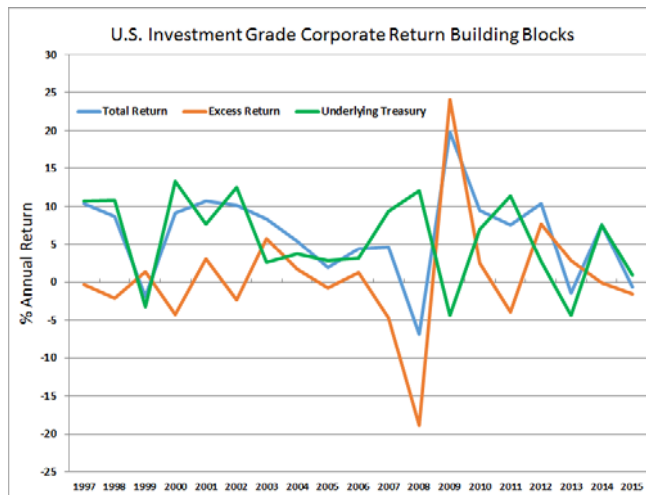
Structure

- Index-based construction
- Daily observable prices & market statistics of underlying constituents (~55,000 fixed income securities, 55 trillion \$US)
- Fixed income metrics: total/excess return & market yields/spreads
- Equity metrics: total return (Income/price)
- Equity cusip level modeling possible

Considerations

- Strengths
 - Observable prices and correlations
 - Not simulated / calibrated estimates or values
 - Independent third party providers
 - Global coverage/multi-currency
 - Intra-Period Estimates
- Weaknesses
 - Infrequent lack of granularity
 - Eighteen years of daily fixed income returns/statistics
 - Dependent on providers data rules

Fixed Income Security - Total Return and Excess Return



Total Return Attribution:

- Interest rates
- Others
 - Credit
 - Default
 - Perception of Default
 - Liquidity
 - Optionality
 - Currency

Source:

Partnership at Work™

Proprietary & Confidential | ©2016 New England Asset Management, Inc. |

Value-at-Risk (VaR) Decomposition – Top Down Approach



1. Portfolio's total return time series (TRR) selected and aggregated based on underlying individual securities and indices
2. Portfolio's overall VaR is quantified
3. Each asset class is further assigned with following risk components (US view):

Asset Class	Risk Factor Exposure				
	Currency	Equity	Interest Rate	Credit	Structure
US Government Bonds			X		
Foreign Government Bonds / Sovereigns	X		X	X*	
US Corporate Bonds			X	X	
Foreign Corporate Bonds	X		X	X	
Mortgage Backed Securities (MBS)			X		X
Commercial Mortgage Backed Securities (CMBS)			X	X	
Asset Backed Securities (ABS)			X	X	
Municipal Bonds			X	X	
Equity-like		X			

*For countries issuing their own currencies, we assume no credit risk associated with their government issued bonds in our VaR decomposition framework

Partnership at Work™

Proprietary & Confidential | ©2016 New England Asset Management, Inc. |

Value-at-Risk (VaR) Decomposition – Top Down Approach (cont'd)

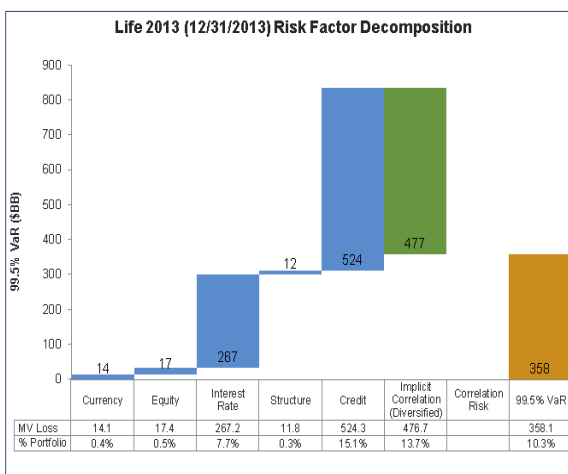


4. For fixed income securities,
 - a. interest rate risk is first determined using the TRR of the “duration-matched” government securities
 - b. the excess return then is attributed to either “credit” or “structure” risk, depending on the asset class
5. Each risk component for the portfolio is quantified individually
6. The difference between the portfolio’s overall VaR and the sum of individual VaR from each risk component is attributed as “diversification” benefit
7. Correlation risk is an add-on VaR (+/-) by changing the observed correlations among securities and indices

Partnership at Work™

Proprietary & Confidential | ©2016 New England Asset Management, Inc. |

Marked-to-Market Observable Price-Based Portfolio Risk Decomposition: Top Down vs. Bottom Up



Traditional Bottom-Up Approach

- Risk impact by key risk factor evaluated separately and independently
- Explicitly assumed correlation matrix among risk factors
- Portfolio risk results aggregated via assumed correlation matrix

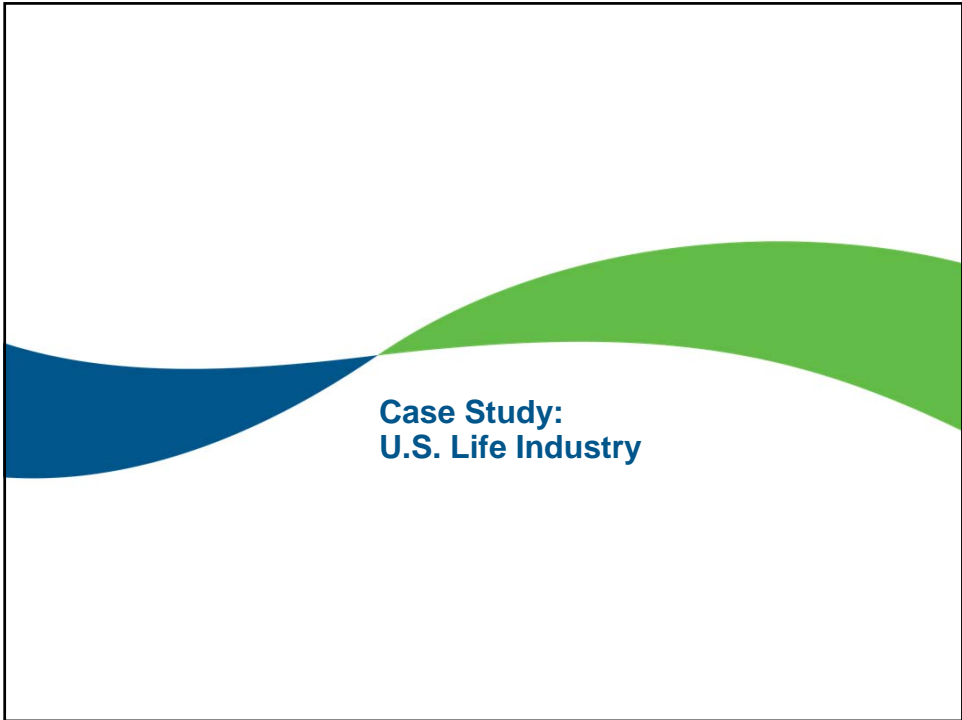
NEAM's Top-Down Approach

- Portfolio level risk impact evaluated holistically
- Not sensitive to correlation assumptions
- Risk factor impacts assessed marginally

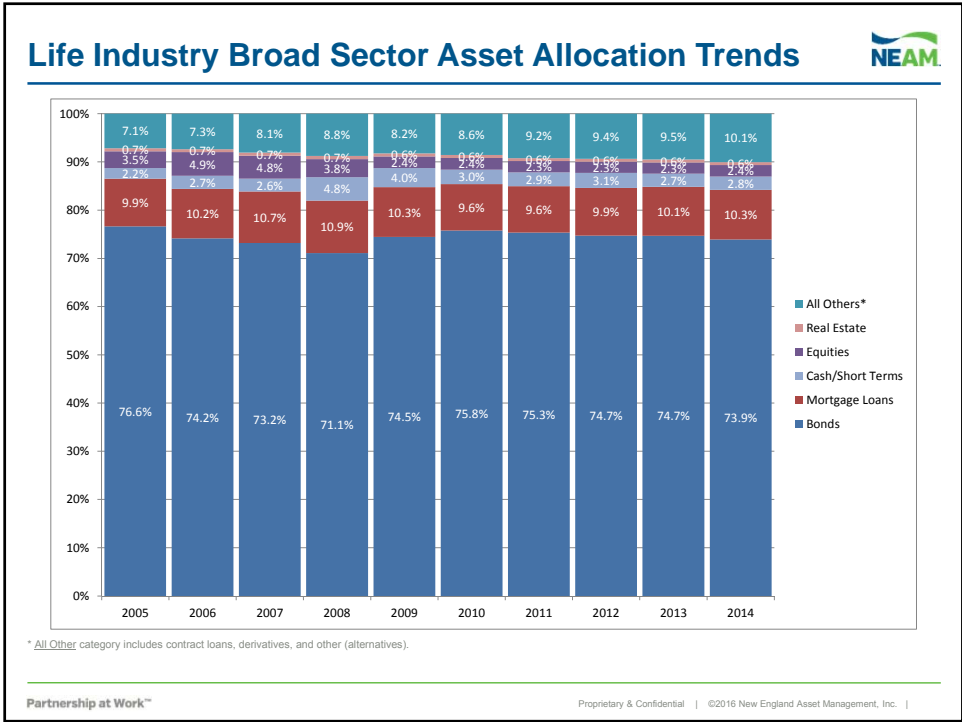
Source:

Partnership at Work™

Proprietary & Confidential | ©2016 New England Asset Management, Inc. |



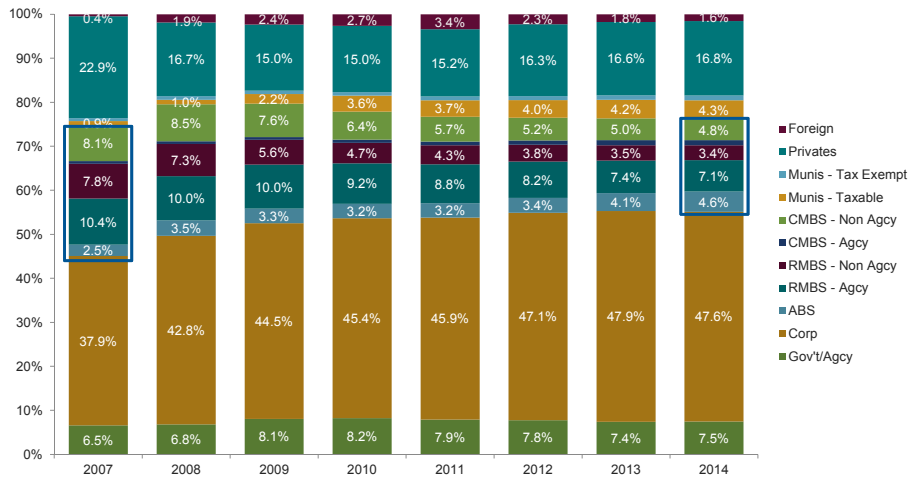
Case Study: U.S. Life Industry



Life Industry Fixed Income Sector Allocation Trends



Fixed Income Sector Allocation

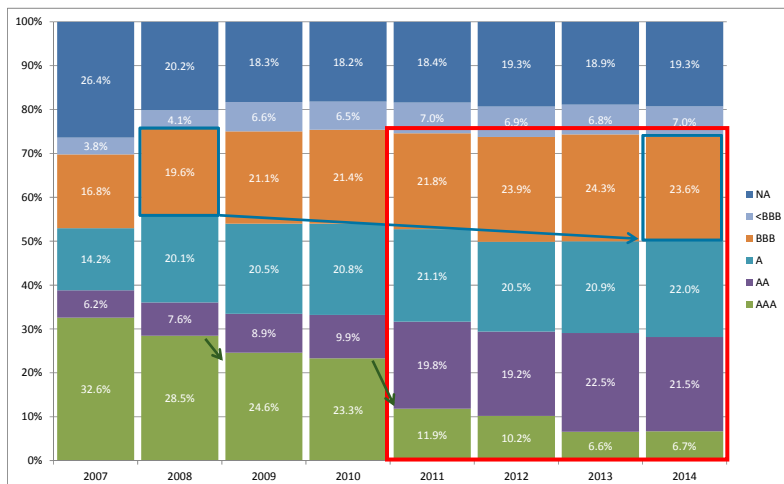


Source:

Partnership at Work™

Proprietary & Confidential | ©2016 New England Asset Management, Inc. |

Life Industry Asset Allocation by Credit Rating



Source:

Partnership at Work™

Proprietary & Confidential | ©2016 New England Asset Management, Inc. |

Life Industry Fixed Income Sector Duration (OAD) Trends



Fixed Income OAD	2006	2007	2008	2009	2010	2011	2012	2013	2014
Gov't/Agcy	7.82	8.21	9.40	9.89	10.01	10.46	10.84	11.21	10.78
Corp	6.11	6.46	6.08	6.61	6.89	7.08	7.43	7.37	7.47
ABS	2.40	2.48	2.73	2.24	2.49	2.70	3.14	3.14	2.15
RMBS - Agcy	4.52	4.31	2.03	3.58	3.86	1.73	2.53	6.31	5.19
RMBS - Non Agcy	3.39	4.06	2.68	6.14	6.33	4.41	4.37	2.69	3.25
CMBS - Agcy	5.83	6.44	3.07	5.04	5.24	4.75	6.77	6.93	7.04
CMBS - Non Agcy	4.69	4.64	3.86	3.78	3.49	3.21	3.26	3.60	3.96
Munis - Taxable	9.57	9.68	9.43	10.18	10.59	10.68	10.65	9.99	9.84
Munis - Tax Exempt	7.68	7.49	8.79	8.50	8.36	8.39	8.40	9.44	9.09
Foreign	7.84	7.31	7.68	8.14	9.48	11.82	14.66	14.37	14.27
Other	5.48	0.24	2.05	5.81	5.04	3.10	2.06	3.24	2.66
Grand Total	5.67	5.82	5.53	6.37	6.78	6.87	7.26	7.39	7.29

Partnership at Work™

Proprietary & Confidential | ©2016 New England Asset Management, Inc. |

Life Industry Holdings Capital Charges: Solvency II "Bottom Up" vs Observable Price "Top Down"



	"Bottom Up" Solvency II	"Top Down" Observable Prices
Life Industry Holdings @ Year End 2013		
Market Value (\$BB)		3,482.2
Industry Capital (\$BB)		331.8
Risk Factor Charges (\$BB) calibrated to 99.5 % VaR*		
Currency	13.2	14.1
Equity	20.2	17.4
Interest Rate "Down"	384.8	267.2
Structure	-	11.8
Credit	553.8	524.3
Concentration**	119.2	-
Diversification	(246.5)	(476.7)
Net Total (Capital Charge, \$BB)	844.7	358.1
Percent of Portfolio	24.3%	10.3%
Percent of Capital	245.5%	107.9%

* Results based on index mapped holdings

** Results approximated as exposures to individual names masked by index mapping

Source: NEAM Analytics

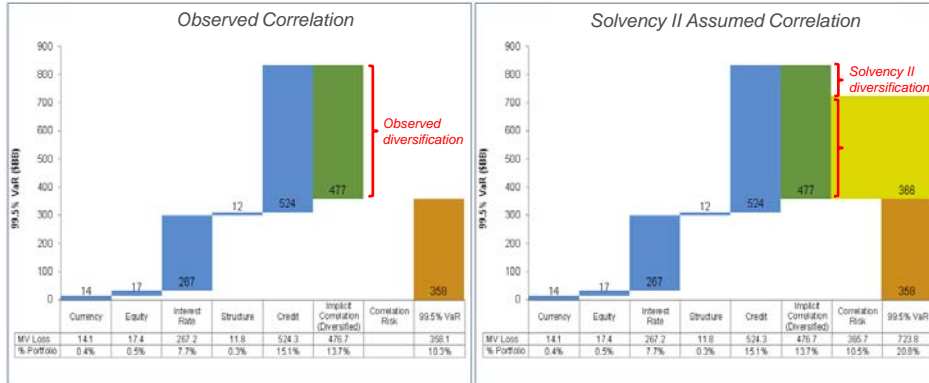
Partnership at Work™

Proprietary & Confidential | ©2016 New England Asset Management, Inc. |

The Assumed "Correlation" Creates SIGNIFICANT Differences



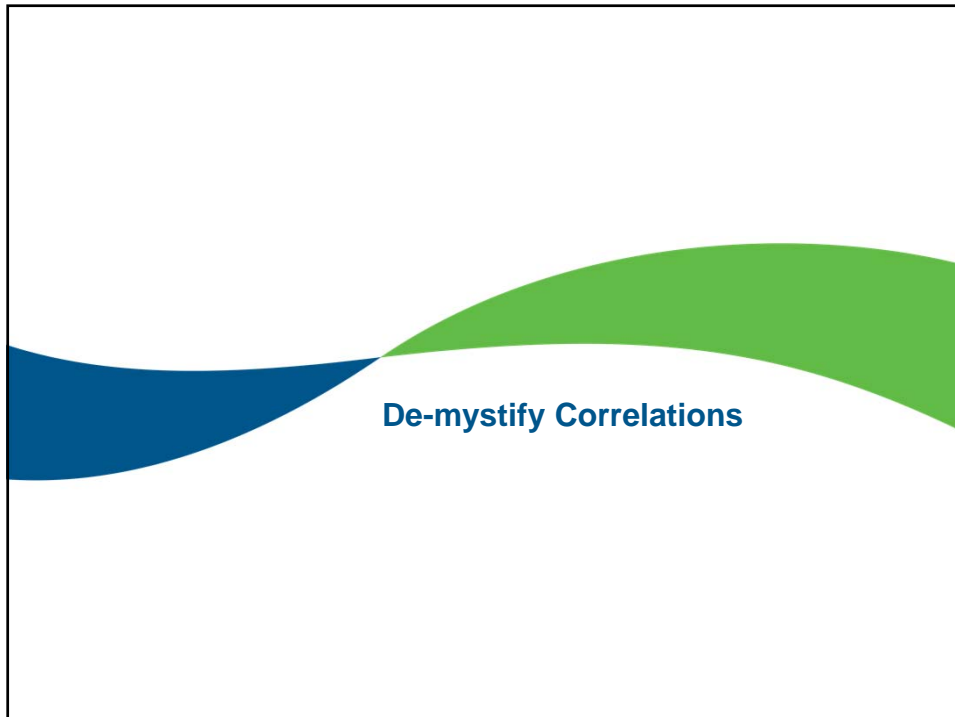
Life Industry Holdings "Observable Prices" Capital Charges (\$BB)



Source: NEAM Analytics

Partnership at Work™

Proprietary & Confidential | ©2016 New England Asset Management, Inc. |



Understand Historical Correlations - Assumptions



Analysis of historic correlations:

- Rate Risk (when contrasted to Equity Risk): Total return volatility of 10-year constant maturity U.S. Treasury bond
- Rate Risk (when contrasted to Spread Risk): Total return volatility of 20-year constant maturity U.S. Treasury bond
- Spread Risk: Volatility of Moody's BBB 20-year corporate bond **excess returns**
- Equity Risk: Volatility of S&P total return index

Analysis Horizon: 1962 to 2016, rolling 20-year window on annual returns

Partnership at Work™

Proprietary & Confidential | ©2016 New England Asset Management, Inc. |

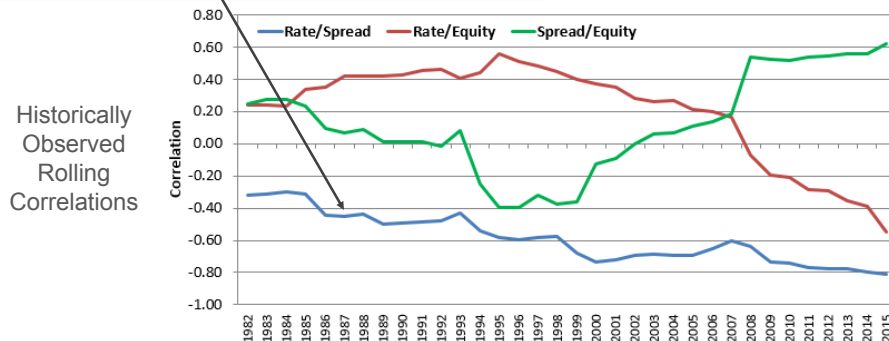
Compare and Contrast: Assumed vs. Historically Observed Correlations



Factor	Interest Rate	Spread	Equity	Currency	Property	Concentration
Interest Rate	1.00					
Spread	0.50	1.00				
Equity	0.50	0.75	1.00			
Currency	0.25	0.25	0.25	1.00		
Property	0.75	0.75	0.25	0.25	1.00	
Concentration	0.00	0.00	0.00	0.00	0.00	1.00

Solvency II Interest Rate Shock "Down" matrix*

* Source "Technical Specification for the Preparatory Phase (Part I)", EIOPA, April 2014, SCR.5.5.

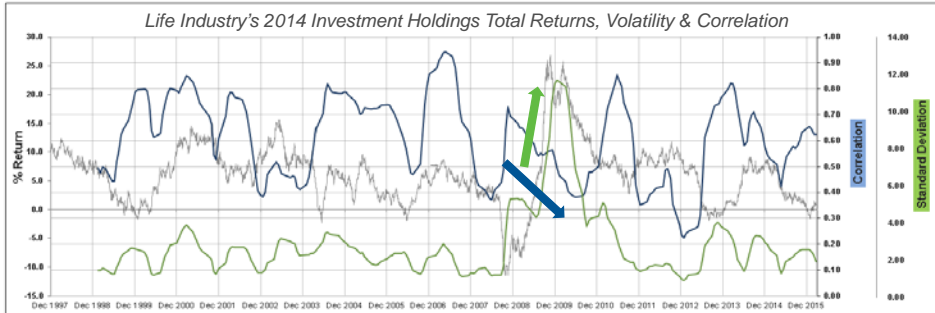


Source: NEAM Analytics

Partnership at Work™

Proprietary & Confidential | ©2016 New England Asset Management, Inc. |

Correlations in Diversified Portfolios



— Rolling Standard Deviation — Rolling Correlation

Conventional wisdom: "In periods of stress, (all) asset valuations become highly correlated" – Historically not supported.

→ High quality assets' valuations might very well increase while lesser credits' valuations' might collapse ("Flight to Quality")

Source: NEAM Analytics

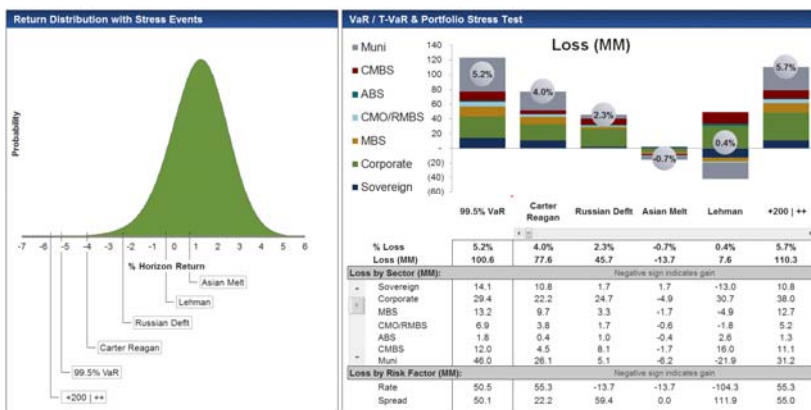
Partnership at Work™

Proprietary & Confidential | ©2016 New England Asset Management, Inc. |

Application – Comprehensive Asset Stress Test



Portfolio Stress Test | ABC Company

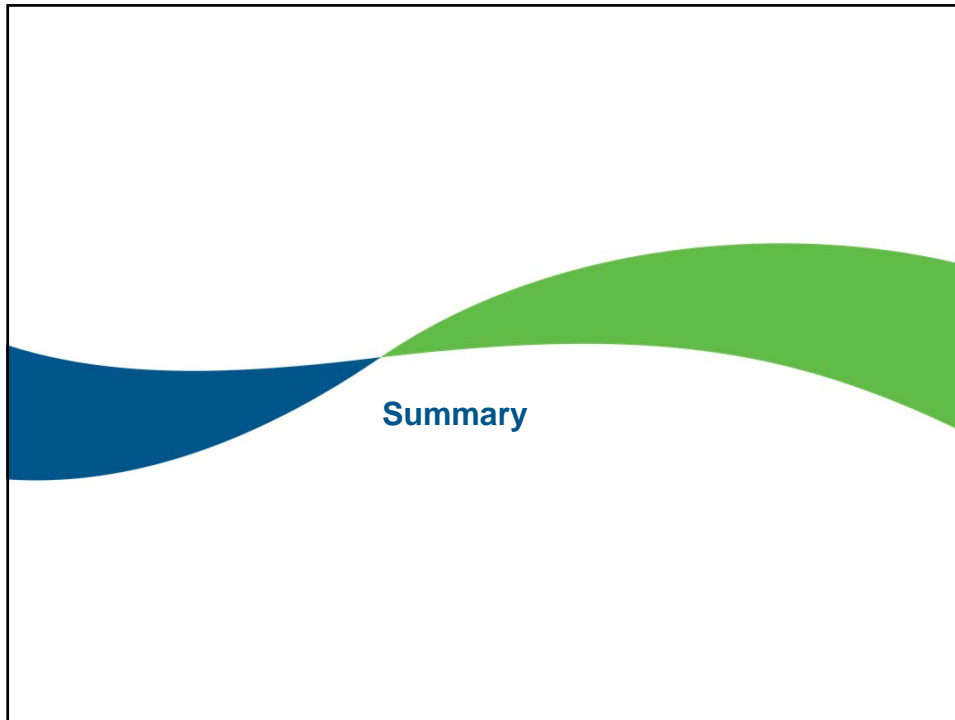


- Contrast prospective VaR/T-VaR with historical stress events
- Estimate potential prospective losses by asset class and risk factors

Source: NEAM Analytics

Partnership at Work™

Proprietary & Confidential | ©2016 New England Asset Management, Inc. |



Summary



- VaR: “Observable Price” vs. “Solvency II” approaches result in material differences in capital charges
- The role of correlation/choice of dependency structure is significant
- Multiple approaches to risk measurement and stress testing in line with Own Risk and Solvency Assessment (ORSA) best practice
- “Observable Price” methodology can serve as an unbiased benchmark for fine-tuning internal models

Parting Thoughts



→ Significant differences in VaR estimates will impact investment risk assessments, asset allocations and capital management as they are woven into internal decision making processes.

Q&A



Mark Yu, FSA, CFA, FRM, MAAA

New England Asset Management, Inc.

Mark.Yu@neamgroup.com

860.676.8722